

D4 series



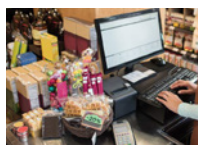
Best Value in mid-range direct-thermal printer



Best Label-saving Protocol!



Before



The desk was rumpled and surveying the mess of things, the space is limited.

After



The compact D4 series fits into tight spaces. Everything was arranged in perfect order.

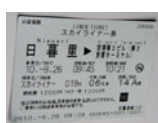
Application



Healthcare



Ticket



Retail



Feature-rich to make daily work simple and easy



printing speed up to 6 inches per second

D4 series in the printing speed is a substantial increase in the maximum speed, which can reach 6 ips.



Ultra Friendly Calibration Modes

Single key Intelli- and Smart-mode calibration performing tasks immediately after installation.



Seamless-converting to Argox printers!

Automatic Language Emulation Detection

Automatic adopting commonly used printer control languages for maximized user friendliness. (Auto-Detection & Auto-Conversion)

*Sales representative for demonstration video.



Multiple Interfaces

The D4 series has built-in Ethernet, USB host, USB device, RS-232 and it can be expanded with Wi-Fi, Bluetooth.

| Print Specifications | D4-250 | D4-350 |
|---|---|----------------------|
| Printing Method | Direct Thermal | |
| Printing Resolution | 203 dpi (8 dots/mm) | 300 dpi (12 dots/mm) |
| Printing Speed | Max. 6 ips | Max. 4 ips |
| Printing Length | Max. 100”(2540 mm) | Max. 50”(1270 mm) |
| Printing Width | Max. 4.25”(108 mm) | Max. 4.16”(105.7 mm) |
| Memory | 32 MB SDRAM, 16MB Flash ROM (USB storage up to 32GB) | |
| CPU Type | 32 bit RISC microprocessor | |
| Consumables Specifications | | |
| Sensors | Reflective sensor x 1 (movable) & Transmissive sensor x 1 (fixed, 6.27mm offset) | |
| Media Type | Roll-feed, die-cut, continuous, fan-fold, black mark, tags, ticket in thermal paper or plain paper | |
| Media | Max. width: 4.65” (118mm). Min. width: 0.88” (22.4mm). Thickness: 0.0024”~0.0075” (0.06mm~0.19mm) 5”(127mm) OD on a 1”/1.5” (25.4/38 mm) ID core; Dealer Option external media stand 8” OD on 1”/3” ID Core | |
| Fonts & Symbolologies | | |
| Fonts | Internal character sets standard 5 alpha-numeric fonts from 0.049”H ~ 0.23” H (1.25mm ~ 6.0mm) Internal fonts are expandable up to 24x24 4 direction 0 ~ 270 rotation Soft fonts are downloadable Ability to print any Windows True Type font easily. Support scalable font | |
| 1D Barcodes | UPC-A, UPC-E, JAN/EAN, CODE39, CODE93, CODE128, GS1-128 (UCC/EAN128), CODABAR (NW-7), ITF, Industrial 2of5, MSI, UPcadd-on code, POSTNET, GS1 DataBar Omnidirectional, GS1 DataBar Truncated, GS1 DataBar Stacked, GS1 DataBar Stacked Omnidirectional, GS1DataBar Limited, GS1 DataBar Expanded, GS1DataBar Expanded Stacked | |
| 2D Barcodes | QR Code, PDF417 (includingMicroPDF), DataMatrix (ECC200), GS1 DataMatrix, MaxiCode | |
| Graphics | PPLA: PCX, BMP, IMG, HEX,GDI PPLB: PCX, BMP, Binary raster, GDI PPLZ: GRF, Hex, GDI | |
| Emulation | PPLA, PPLB, PPLZ | |
| Interface Characteristics and Integration | | |
| Operation Interface | LED Indicator x 2, Button(Feed) x 1 | |
| Communication Interface | USB device, RS-232, Ethernet, USB host | |
| Software-label Editing | Windows Driver for Windows XP/Vista/Win7/Win8/Win10, BarTender® from Seagull Scientific | |
| Software-Utility | Printer Tool | |
| Database Link | Argobar Pro support ODBC Database Connection: Excel, CSV, MS Access, MS SQL, Oracle MySQL, dBASE (*.dbf) | |
| Operating & Environment Characteristics | | |
| Power Source | Universal Switching Power supply. AC input voltage: 100~240V, 50~60Hz. DC Output: 24V, 2.5A | |
| Operation Environment | Operation Temperature: 41°F~104°F (5°C~40°C), 0% ~ 90% non-condensing, Storage Temperature: -4°F~140°F (-20°C~60°C) | |
| Agency Listing | CE, FCC, cULus, CCC, RoHS, BSMI, RCM, CB, BIS | |
| Physical Characteristics | | |
| Printer Dimensions | W 183mm x H 225.9mm x D 166mm | |
| Printer Weight | 3.88 lbs (1.76 kg) | |

*Argox reserves the right to enhance and modify the specification without prior notice.
Please check Argox sales representative for most updated specifications.

Optional Items



Full/partial cutter,
guillotine-type



Peeler



WLAN



Bluetooth



External media
stand

ACRC
ARGOX Certified Repair Centers

Consult your local Argox business
partners for location and contacts.



Argox Information Co., Ltd.

7F., No.126, Ln.235, Baoqiao Rd., Xindian Dist., New Taipei City 231, Taiwan (R.O.C.)

Tel: +886-2-8912-1121 Fax: +886-2-8912-1124 <https://www.argoxt.com> <https://www.youtube.com/user/argoxtmkt> email:service@argoxt.com

Copyright © 2018. Argox Information Co., Ltd. All Rights Reserved.