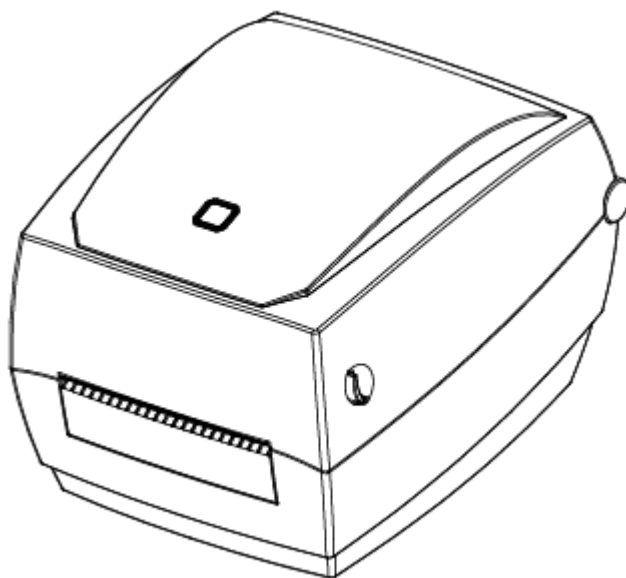


Label Printer

User Manual **HT100**



Xiamen Hanin Electronic Technology Co.,Ltd

ADD: 5F, 8#, Aide Airport Industrial Park,
Huli District, Xiamen ,China 361009

Tel.: +86-(0)592-5885993

Fax: +86-(0)592-5885992

Web: www.hpvt.com

Contents

Manual Information	2
Important Safety Instructions.....	2
Chapter 1 Introduction	5
1.1 Packing List	5
1.2 Appearance and Components	6
1.3 Dimension.....	7
Chapter 2 Specifications	8
Chapter 3 Installation & Usage	10
3.1 Media Loading	10
3.2 Power Connection	16
3.3 Peripherals Connection	17
3.4 Detection	18
3.5 Control Panel	19
3.6 Basic Function.....	19
Chapter 4 Interface.....	22
4.1 USB Interface	22
4.2 Other Optional Interface	22
Chapter 5 Maintenance & Adjustment	24
5.1 Cleaning Media Sensor	24
5.2Cleaning Thermal Printing Head.....	24
5.3 Cleaning Roller and/or Paper Path	24
Chapter 6 Label Printer Utility Instructions.....	25
6.1 Installation Preparation	25
6.2 Usage	25
Chapter 7 Seagull Windows Driver Installation.....	33
7.1 Introduction.....	33
7.2 Installation Preparation	33
7.3 Installation	34
Chapter 8 BarTender® Ultralite Installation	39
8.1 Introduction.....	39
8.2 Installation Preparation	39
8.3 Installation	40

■ Statement

This manual content may be altered without permission, and Xiamen Hanin Electronic Technology Co., Ltd. reserves the rights to make changes without notice in technology, spare parts, hardware and software of the products. If more information is needed about the products, please contact Xiamen Hanin Electronic Technology Co., Ltd. Without any written permission from the company, any section of this manual is prohibited to be copied or transferred in any form.

■ Copyright

This manual is printed in 2016, the copyright belongs to Xiamen Hanin Electronic Technology Co. Ltd.

Printed in China

1.0 Version

■ Warnings



This must be complied with in order to avoid any damage to the human body and the equipment.



This is showing the important information and tips for the printer operation.

Manual Information

This *User Manual* contains basic information for product usage as well as for emergency measures that may be required.

Provides information on utility usage for function selection, operating condition modification etc.

Provides information on Seagull Windows Driver installation.

Provides information on BarTender® UltraLite installation.

※ Following separate manual provide more detailed content on various technological issues and areas.

1.Programming Manual

This manual provides information on label printer commands.

Important Safety Instructions

Before using the appliance, please carefully read the following safety regulations in order to prevent any hazard or material damage.

1. Safety warning



Warnings: The print head will become very hot during printing; avoid contact with the print head after printing has finished.



Warnings: Do not touch the printer head and connector in case static damage the printer head.

2. Instructions



Warnings: Violating following instructions can cause serious injury or death.

- 1) Do not plug several products in one multi-outlet.
 - This can provoke over-heating and a fire.
 - If the plug is wet or dirty, dry or wipe it before usage.
 - If the plug does not fit perfectly with the outlet, do not plug in.
 - Be sure to use only standardized multi-outlets.
- 2) You must use only the supplied adapter.
 - It is dangerous to use other adapters.
- 3) Do not pull the cable to unplug.
 - This can damage the cable, which is the origin of a fire or a breakdown of the printer.
- 4) Do not plug in or unplug with your wet hands .
 - You can be electrocuted.
- 5) Do not bend the cable by force or leave it under any heavy object.
 - A damaged cable can cause a fire.



Caution: Violating following instructions can cause slight wound or damage the appliance.

- 1) If you observe a strange smoke, odour or noise from the printer, unplug it before taking following measures.
 - Switch off the printer and unplug the set from the mains.
 - After the disappearance of the smoke, call your dealer to repair it.
- 2) Install the printer on the stable surface.
 - If the printer falls down, it can be broken and you can hurt yourself.
- 3) Use only approved accessories and do not try to disassemble, repair or remodel it for yourself.
 - Call your dealer when you need these services.
 - Do not touch the blade of auto cutter.
- 4) Do not let water or other foreign objects drop into the printer.
 - If this happened, switch off and unplug the printer before calling your dealer.
- 5) Do not use the printer when it is out of order. This can cause a fire or an electrocution.
 - Switch off and unplug the printer before calling your dealer.
- 6) Other considerations:
 - Place the printer on a solid and even base so that it cannot fall.
 - Leave enough space around printer for operation and maintenance.
 - Keep all liquids away from the printer.
 - Do not expose the printer to high temperatures, direct sunlight or dust.
 - Ensure the printer is connected to a socket with the correct mains voltage.
 - Switch off the printer POWER supply when it's not in use for a long time.
 - To ensure the printing quality and reliability, suggest use the same quality or recommend paper supplier.
 - Pls. switch off the POWER supply when connect/disconnect all the ports or it will cause damage to the printer control circuit.
 - Never carry out maintenance or repair work yourself. Always contact a qualified service Technician.
 - Keep this User Manual in a place which is easily accessible at all times.

3.Other Precautions

The copyright for this user manual and various other manuals is property of HPRT. Any copying or conversion into electronic form and saving of this material without the express written permission is strictly prohibited. Use of the information contained in this manual is not subject to any patent liability. This manual has been prepared with utmost care and attention to detail but may contain certain errors and/or omissions. HPRT is not legally liable for any damages resulting from the use of the information in this manual. Our company and its affiliates are not legally liable (United States excluded) for any damages, loss, costs, and/or expenses that result from the breakdown, malfunction, and/or misuse of the product due to violation or neglect of the operation and maintenance information and instructions provided by our company, as well as from the unauthorized alteration, repair, and/or modification of the product by the user and/or third party. We are not legally liable for any damages and/or issues resulting from the use of options and/or parts that are not authentic or authorized products.

Due to the continuous update of product specification, accessories and program, please in kind prevail.

4.WEEE (Waste Electrical and Electric Equipment)

This mark shown on the product or its literature indicates that the corresponding item should not be discarded at the end of its working life with other household waste. To prevent possible harm to the environment or human health from uncontrolled waste disposal, please separate marked items from other types of waste and recycle them responsibly to promote the sustained reuse of material resources. Household users should contact either the retailer where they purchased this product, or their local government office for details of where and how they can conduct environmentally safe recycling of such items. Commercial users should contact their suppliers and check the terms and conditions of purchase contracts. This product should not be combined with other commercial waste for disposal.

Chapter 1 Introduction

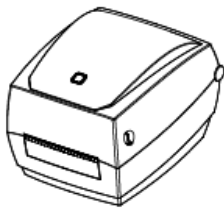
1.1 Packing List



Notes:

1. Unpack the printer and keep the packing material in case you need to ship the printer in the future.
2. Make sure you own all parts as follows, if not, do contact the local dealer.

■Standard accessories



Printer



AC Adapter



Power Cord



Quick Start Guide



CD

■Optional accessories.



USB Cable

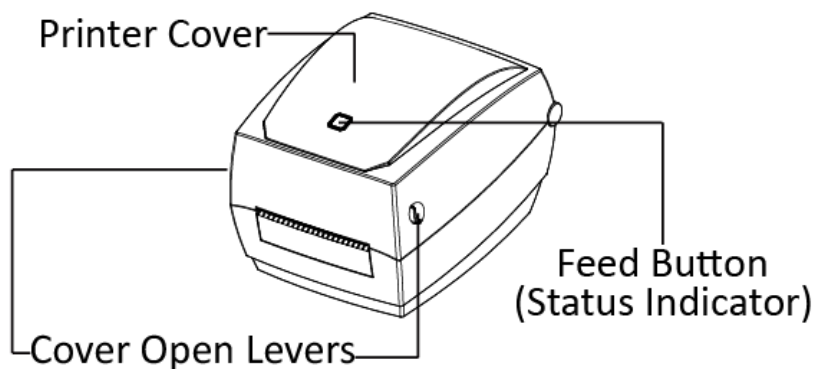


Serial Cable

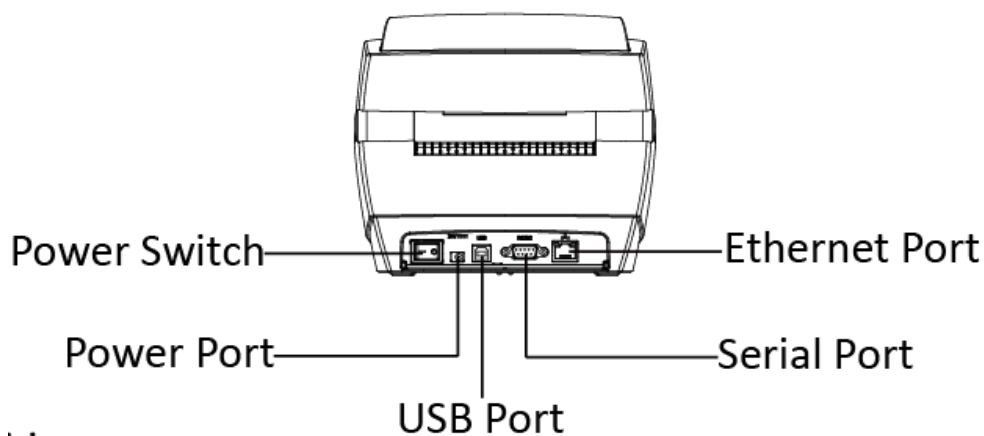
Note: The AC adapter and power cord varies by local or region.

1.2 Appearance and Components

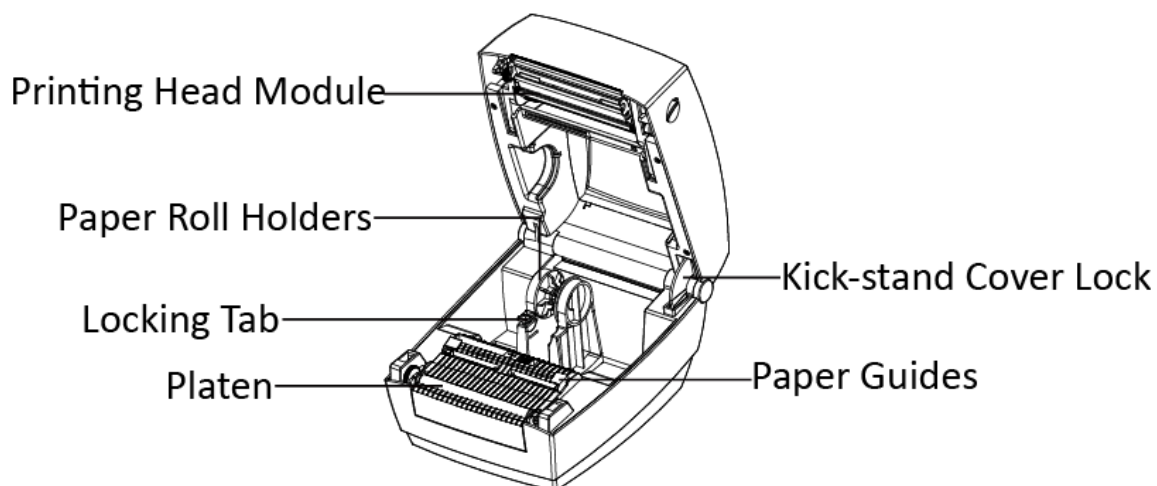
■ Front



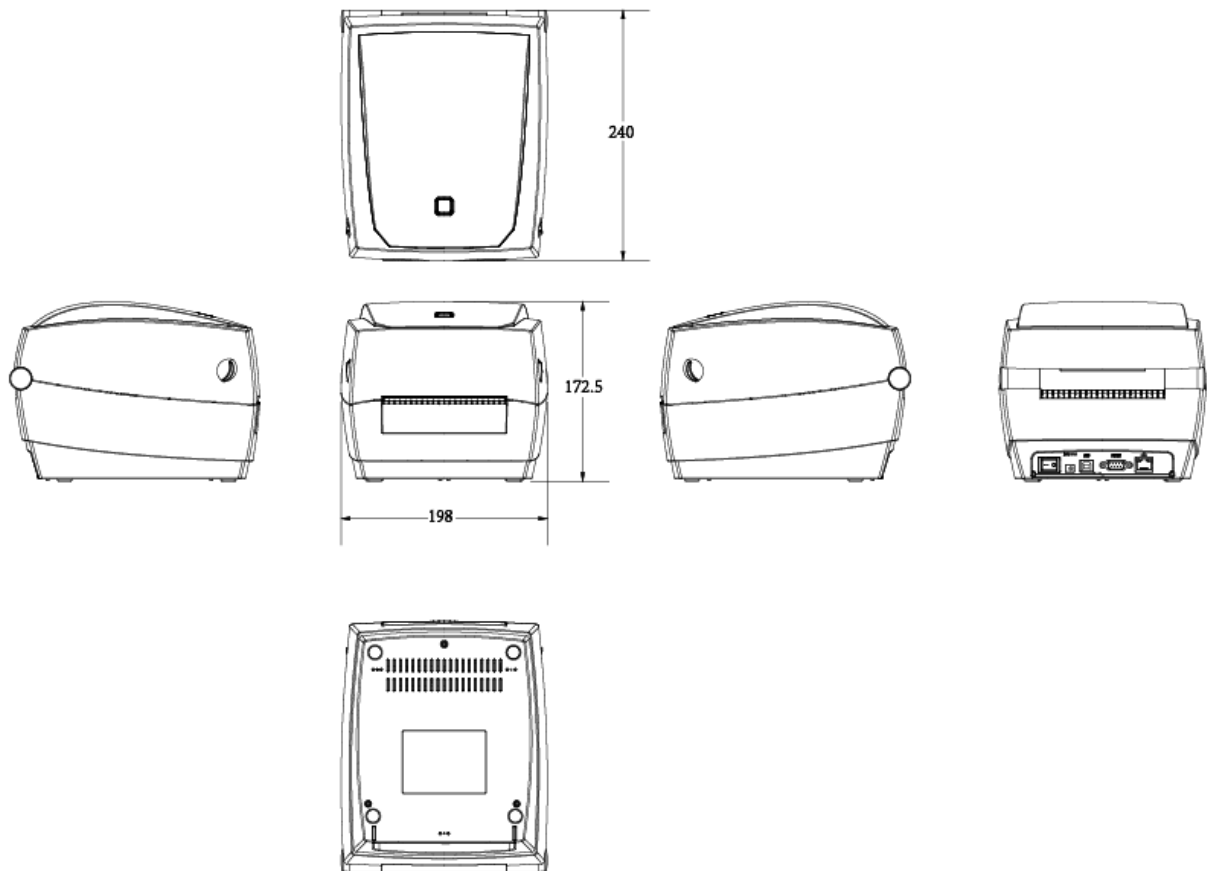
■ Rear



■ Inside



1.3 Dimension



Chapter 2 Specifications

(2/1)

Items		Parameter
Printing	Printing Method	Thermal Transfer/Direct Thermal Printing
	Resolution	203dpi(8dots/mm)
	Printing Speed	127mm/s Max.
	Printing Width	108mm Max.
	Printing Length	15mm - 1200mm
Processor		32 bit RISC CPU
Memory	RAM	32MB
	Flash	16MB
Detection	Sensors	Adjustable reflective sensor, Fixed transmissive sensor(Central aligned), Head-up sensor, Ribbon end sensor
Media	Types	Roll-fed or Fan-fed, Die-cut or Continuous label, Tag stock, Continuous receipt paper
	Width	0.79"(20mm) – 4.65"(118mm)
	Thickness	0.003"(80um) – 0.007"(180um)
	Label Roll Diameter	5"(127mm)
	Core Diameter	0.5"(25.4mm), 1"(25.4mm), 1.5"(38mm)
Ribbon	Types	Wax, Wax/Resin, Resin
	Width	1.33"(33.8mm) – 4.33"(110mm)
	Length	328'(100m)
	Core Diameter	0.5"(25.4mm)
Programming Language		TSPL Simulation
Software	Label Design	Bartender UltraLite
	Seagull Driver	Windows 2000,XP,Vista7,8,10
Resident Fonts	Bitmap Fonts	8, 12, 16, 24, 32 and OCR A & B 90°, 180°, 270° rotatable. 10 times maximum expandable in horizontal and vertical directions.
	TTF Fonts	Monotype CG Triumvirate™ scalable true type font
Download Fonts	Bitmap Fonts	90°, 180°, 270° rotatable, single characters 90°, 180°, 270° rotatable
	TTF Fonts	90°, 180°, 270° rotatable
	Asian Fonts	16x16, 24x24. Traditional Chinese, Simplified Chinese, Japanese, Korean
Code Pages		DOS437,720,737,755,775,850,852,855,856,857,858,860,862,863,864,865,866, Windows1250,1251,1252,1253,1254,1255,1256,1257,1258 ISO8859-1,-2,-3,-4,-5,-6,-8,-9,-15 DBCS 932 (JIS), 936(GBK), 949 (Korean), 950(BIG5)
Barcode	1D	Code 39, Code 93, Code 128UCC, Code 128 subset A, B, C, Codabar, Interleave 2 of 5, EAN-8, EAN-13, EAN-128, UPC-A, UPC-E, EAN and UPC 2 (5) digits add-on, MSI, PLESSEY, POSTNET, RSS-Stacked, GS1 DataBar, Code 11
	2D	PDF417, Maxicode, DataMatrix, QR Code, Aztec
Interfaces	Standard	USB,RS232C,Ethernet
	Option	Bluetooth, WiFi
Control Panel		Feed button with tri-color LED

(2/2)

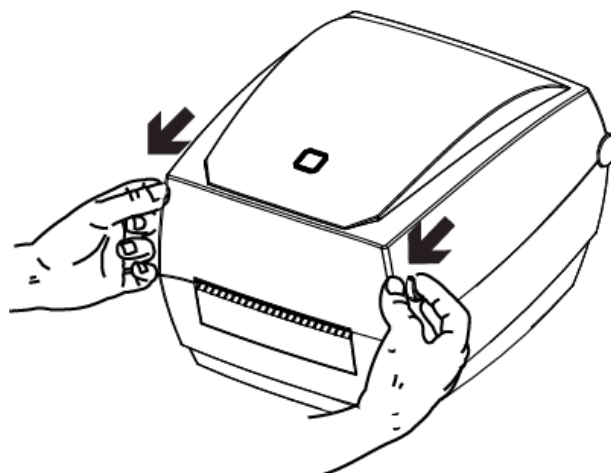
Items		Parameter
Power		AC/DC switching power adapter I/P: AC100-240V, 50/60Hz, O/P: DC 24V/2A, peak 5A
Environment	Operation	41°F (5°C)-104°F (40°C), 30%-85%(non-condensing)
	Storage	-4°F (-20°C)-122°F (50°C), 10%-90%(non-condensing)
Physical Characteristics	Dimension(L*H *W)	240*172.5*198mm
	Weight	2.26kg(excluding consumables)
Options & Accessories		External label roll holder for 8" (203mm) OD label rolls
Agency Approvals		CCC,FCC,CE

Chapter 3 Installation & Usage

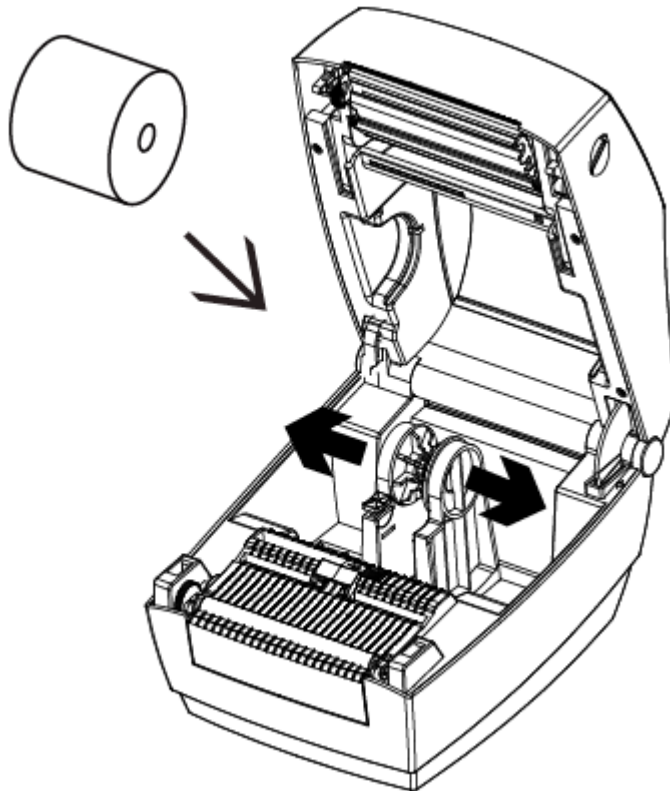
3.1 Media Loading

3.1.1 Paper Roll Loading

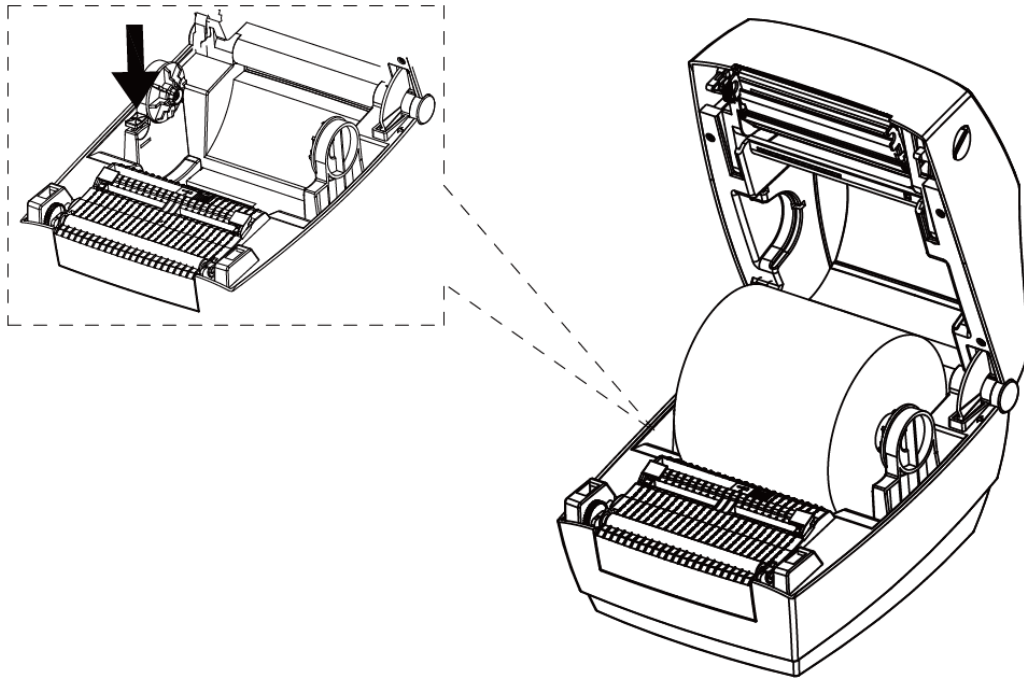
1. Pull forward the left and right cover open lever with both hands simultaneously and lift up the printer cover.



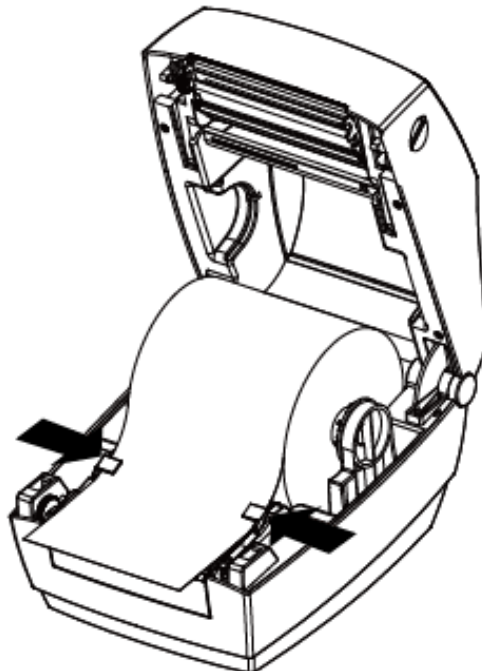
2. Slide the paper holders to adjust the distance between them, place paper roll into the holders, adjust paper roll holders according to paper roll's width. (Make sure the locking tab is un-lock, so that users can adjust the paper holders)



3. Make sure the holders are snug against the sides of the media roll, and then press the locking tab down to lock the media holders in place.

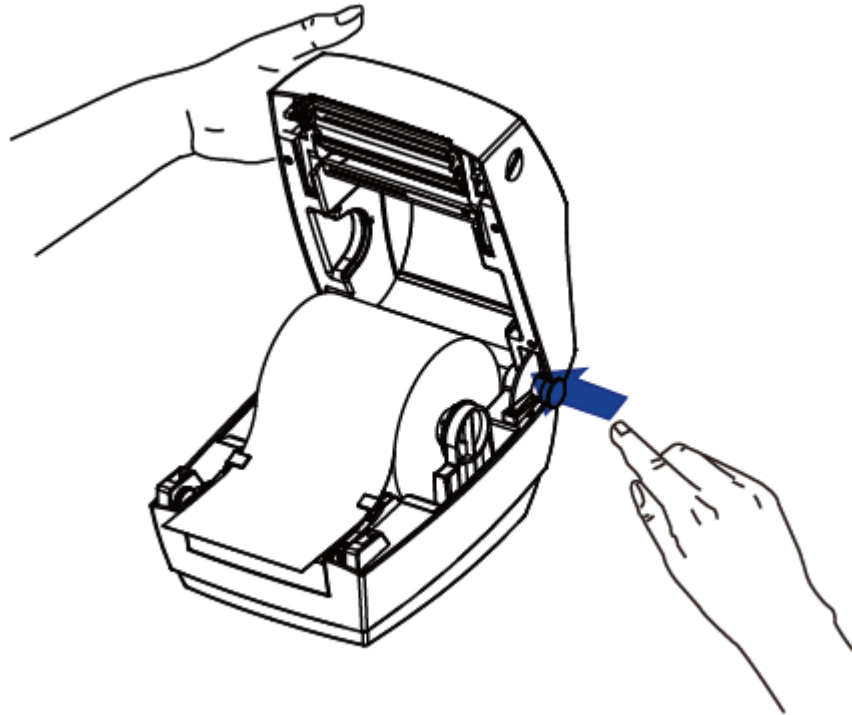


4. Pull some paper out and pass it through paper guides, adjust paper guides according to the paper width

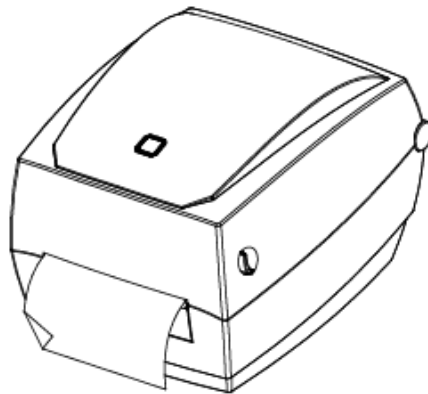


Note: If your printer is under Thermal Line Printing Method, please close the printer cover, and press the cover until you hear a sound. Otherwise, continue the procedure in chapter 3.1.4

5. Hold the printer cover while press the kick-stand cover lock in the direction of arrow.

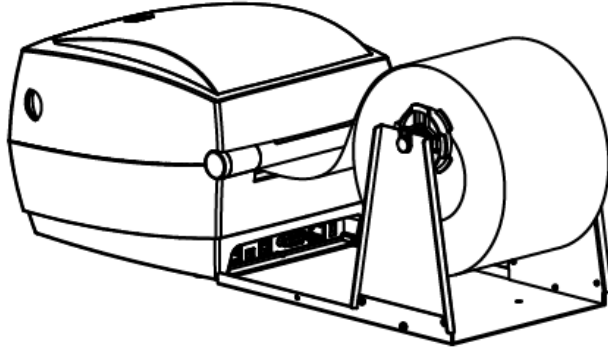


6. Lower the printer cover, press down until the cover snap close, and tear the extra paper in the direction of printer.



3.1.2 External Paper Roll Loading

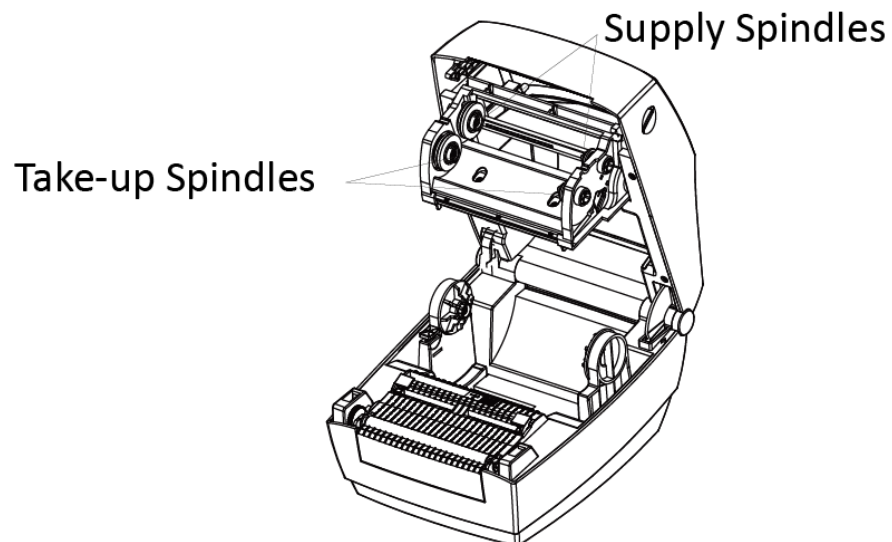
If the paper roll is extremely large, users can load the paper roll outside(See the graph at right). Pass the paper through the external feed slot and then through the paper guides. Adjust the paper guides according to the paper width.



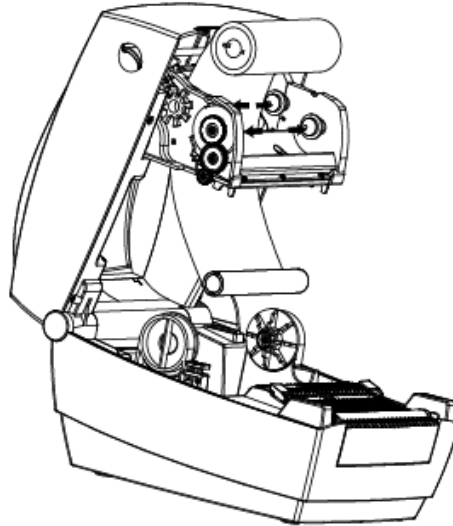
Note: The paper holder is fixed on sides by locking tab.

3.1.3 Ribbon Loading

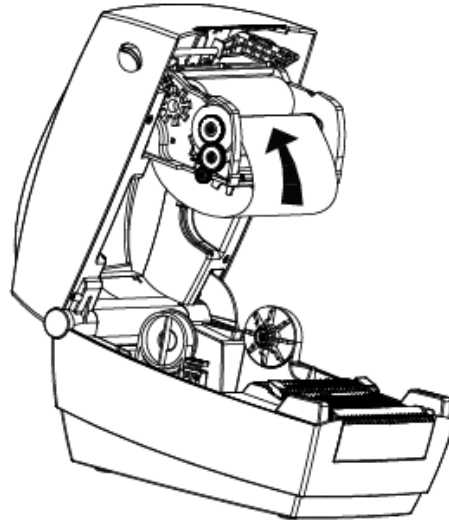
1. Press the left and right cover open lever with both hands simultaneously and lift up the printer cover, the printing head module will automatically open.



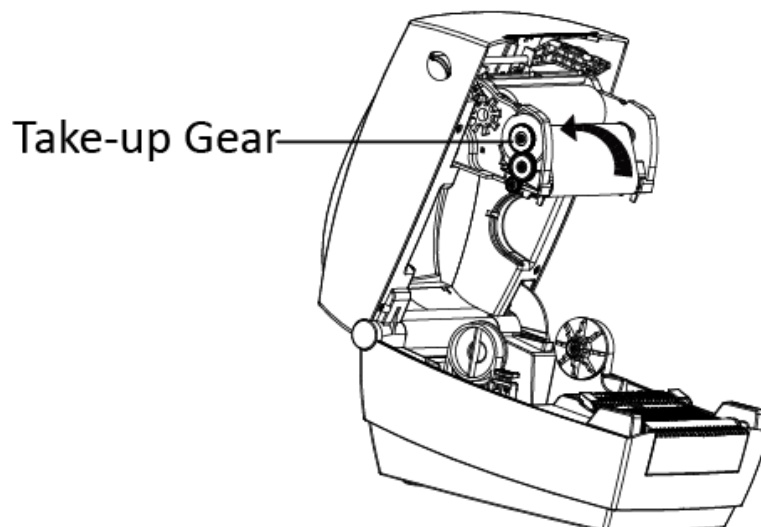
2. Put the new ribbon into the supply spindles, and the bare core into the take-up spindles.



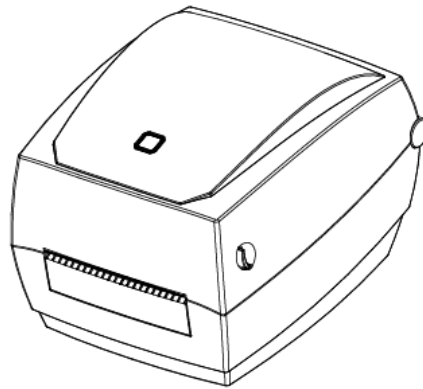
3. Pull some ribbon out, pass it through the printing head. Stick the ribbon to the bare core. Use the adhesive strip on the new rolls, otherwise, use tape.



4. Turn the ribbon take-up gear counter-clockwise to remove slack from the ribbon.

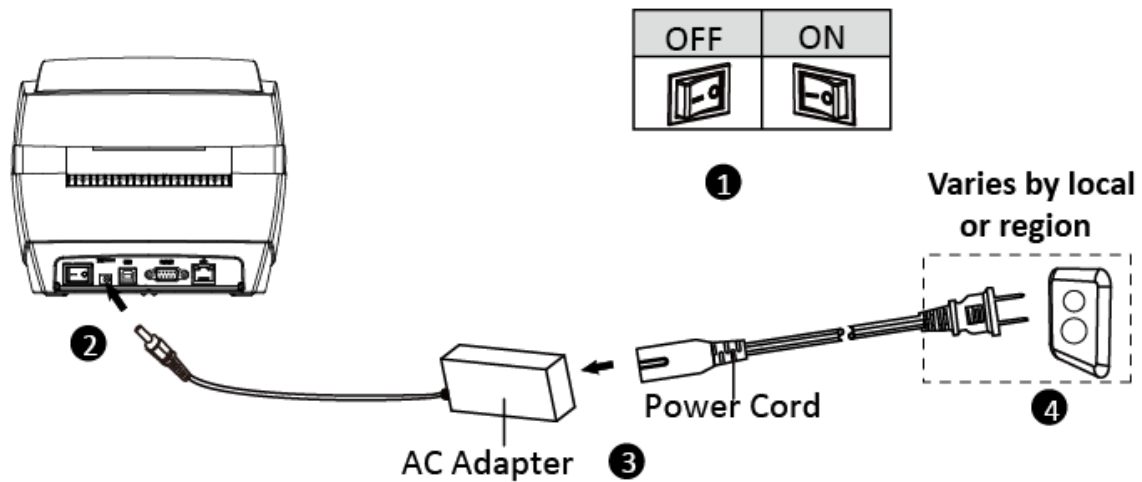


5. Close the printer cover and printing head module will automatically fold up, until you hear a sound.



3.2 Power Connection

1. Make sure the printer is "OFF"
2. Connect the AC adapter with power interface.
3. Connect the AC adapter with power cord.
4. Plug the other side of power cord into the socket outlet.



CAUTION:

- Please use the specified AC adapter in case of product damage or injury.
- Please unplug the power cord if the printer would not use for long-term.

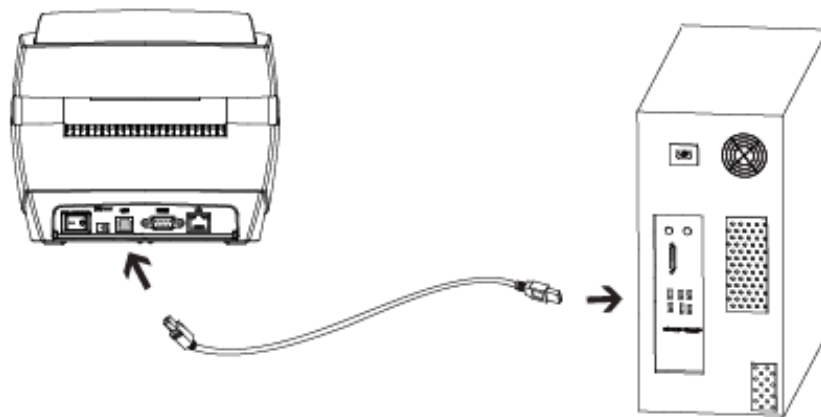
3.3 Peripherals Connection

3.3.1 Interface Cable Connection

The standard for the printer's interface cable is below:

- USB B-Type cable
- RS-232C cable
- RJ45 cable

Please follow the graph instruction to connect the cable.



1. Make sure the printer is off.
2. Please plug in the cables
 - Insert the USB B-Type cable into the interface.
 - Insert the RS232 cable into the interface.
 - Insert the RJ45 cable into the interface.

3.3.2 Bluetooth Connection

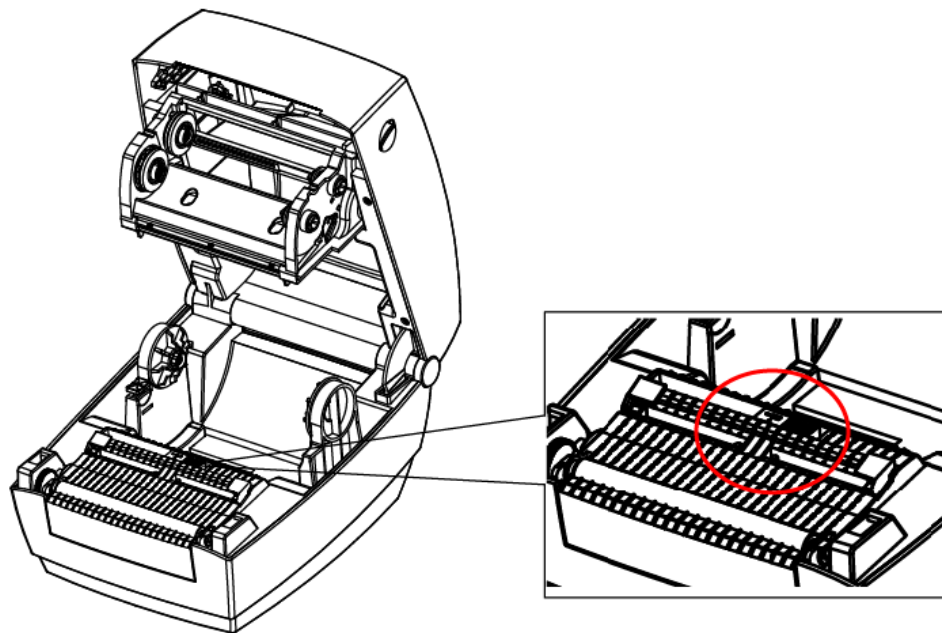
PDA with Bluetooth interface, laptop and other information terminals can drive the mobile thermal printer HT100. Instructions as follows:

1. Power on printer.
2. Primary device search for outer Bluetooth devices.
3. If there are some outer Bluetooth devices, choose HT100.
4. Finish matching.

Detailed pairing methods, please refer to primary devices Bluetooth Names.

After pairing, primary devices with virtual Bluetooth interface (smart phone , pocket PC, palm, notebook) can drive mobile thermal printer HT100 to printer through such virtual Bluetooth interface.

3.4 Detection



3.5 Control Panel



FEED Button

When the printer is on, press this button, printer will automatically feed a label under “Label Mode”; the printer will feed a fixed distance under “Continuous Mode”;

When the printer is printing, press this button, current printing job pauses, and the LED indicator is white(tri-color blue, green, red); press this button again, the printing continues.

3.6 Basic Function

3.6.1 Power On/ Power Off

Turn on the power switch at the rear, the printer is on and LED indicator is blue.

Turn off the power switch at the rear, the printer is off.

3.6.2 FEED Button

1. When the printer is on, press this button, printer will automatically feed a label under “Label Mode”; the printer will feed a fixed distance under “Continuous Mode”;
2. When the printer is printing, press this button, current printing job pauses, and the LED indicator is white(tri-color blue, green, red); press this button again, the printing continues.

LED Indicators and Status

LED Indicators					Printer's Status
Color				Status	
Blue	Green	Red	Shown Color		
√	-	-	Blue	On	Printer is ready
√	-		Blue	Flash	Do not pass RAM test
√	-	√	Pink	On	TPH overheat
√	-	√	Pink	Flash	The ribbon is used up
-	-	√	Red	On	The printer cover is not close properly
-	-	√	Red	Flash	Out of paper
-	√	√	Yellow	On	Printer's voltage is too low or too high
-	√	√	Yellow	Flash	Paper jams
√	√	√	White	On	Printing pause

3.6.3 Quick Calibration



Note: *Users must carry out the calibration under those conditions below:*

- The first time to use the printer since installation;
- The first time to use the printer since sensor cleaning;
- Reuse the printer that has not been used for a long time;
- Change a new type of media;
- Printer cannot recognize the mark;
- Huge change of operating environment;

Calibration method:

1) Carry out calibration manually.

2) Carry out calibration by printer utility. See more information in Label Printer Utility Instructions.

Calibrate Manually:

When printer is ready, hold the FEED button for 3s until the Status Indicator(Blue) flash twice and then release the button, printer start to do the calibration; When printer do the calibration under Continuous Media Mode, the calibration is invalid.



Note: After the quick calibration, users could open the printer cover to pull back the learned paper in avoid of paper wasting.

3.6.4 Print Self-test Page

The self-test checks the printer's current settings, status and whether the printer has any problem.

1. Print Self-test Page Manually

1. Make sure paper is loading properly.
2. Make sure the printer is off and top cover closes properly. .
3. Pressing the paper feed button and turns the printer on simultaneously. The printer is ready to receive data as soon as it completes the self-test.

2. Printing by Windows Driver Program

1. Install the Seagull Windows Driver program. (Please refer to the Seagull Windows Driver Installation)
2. Please set the "Interface" as the type you use.
3. Use the Windows Driver Program to print out the "Self-test page".

Chapter 4 Interface

4.1 USB Interface

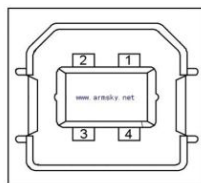


Figure 4-1

PIN	SIGNAL NAME
1	VBUS
2	D-
3	D+
4	GND

4.2 Other Optional Interface

■ Serial Port

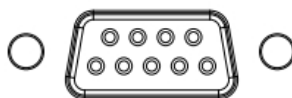


Figure 4-2

PIN	SIGNAL NAME
1	-
2	TXD
3	RXD
4	-
5	GND
6	RTS
7	CTS
8	RTS
9	-

■ Ethernet Port

PIN	SIGNAL NAME
1	TX+
2	TX-
3	RX+
4	-
5	-
6	RX+
7	-
8	-

Chapter 5 Maintenance & Adjustment

Adhesives and coatings of the media can transfer onto the printer parts over time along the media path including the thermal print head and media sensor. This build-up can accumulate dust and debris. Failure to clean the print head, media path, and media sensor could result in print quality, worst more of inadvertent loss off labels, label jams and possible damage to the printer.

※ CAUTION

- Make sure to turn off the printer prior to cleaning.
- As the print head gets hot during printing, if intending to clean the print head, turn the printer off and wait approximately 2~3 minute before commencement.
- When cleaning the print head, take care not to touch the heated portion of the print head.
→ Print Head is susceptible to damage from static electricity, etc. So it is strongly recommended to wear hand gloves during cleaning progress.
- Take care not to allow the print head become scratched and/or damaged in any way.

5.1 Cleaning Media Sensor

Debris or dirt on the paper sensor can cause a miss-read or unstable detection of the label gap. Clean with a cotton bud dampened with alcohol.

5.2 Cleaning Thermal Printing Head

Thermal Paper stock on the print head, which degrades print quality. Clean the print head with methanol or isopropyl alcohol and a cotton bud. Do not touch the heating elements with your fingers.

- 1) Open the Printer Cover and then use the cleaning pen to clean the head in the direction from the center of the head to two sides.
- 2) After cleaning the head, do not use the printer until the alcohol used for cleaning evaporates completely (1~2 min) and the printer has completely dried.
- 3) ※ Perform the cleaning process each time the paper roll is replaced to prevent print quality deterioration.

5.3 Cleaning Roller and/or Paper Path

- 1) Open the printer cover and then remove the paper.
- 2) Remove any dust or foreign substance using dry cloth or cotton swab.
- 3) Soak the cloth or cotton swab in alcohol for medical use and use it to remove adhesive foreign substances or other pollution materials.
- 4) After cleaning the parts, do not use the printer until the alcohol evaporates completely (1~2 min) and the printer has completely dried

※ Clean the parts whenever print quality or paper detection degraded.

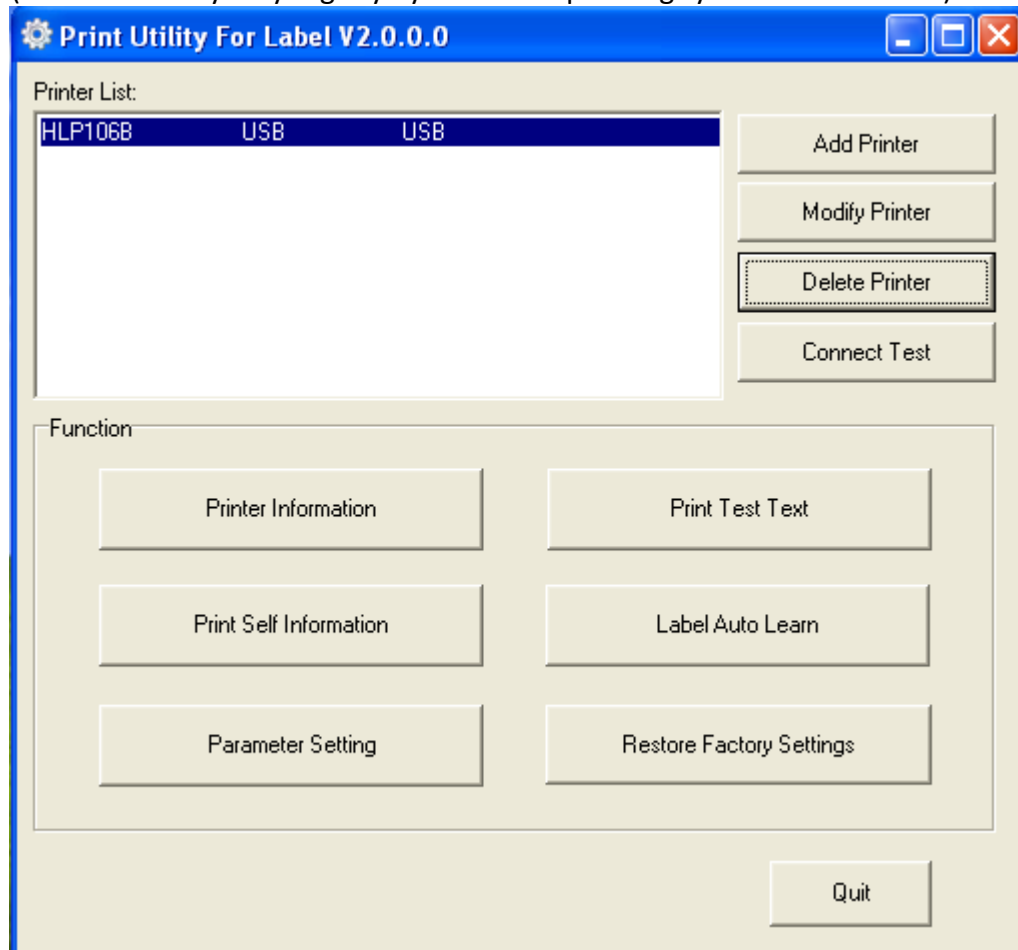
Chapter 6 Label Printer Utility Instructions

6.1 Installation Preparation

Download HPRTUtilityLabel application program.

6.2 Usage

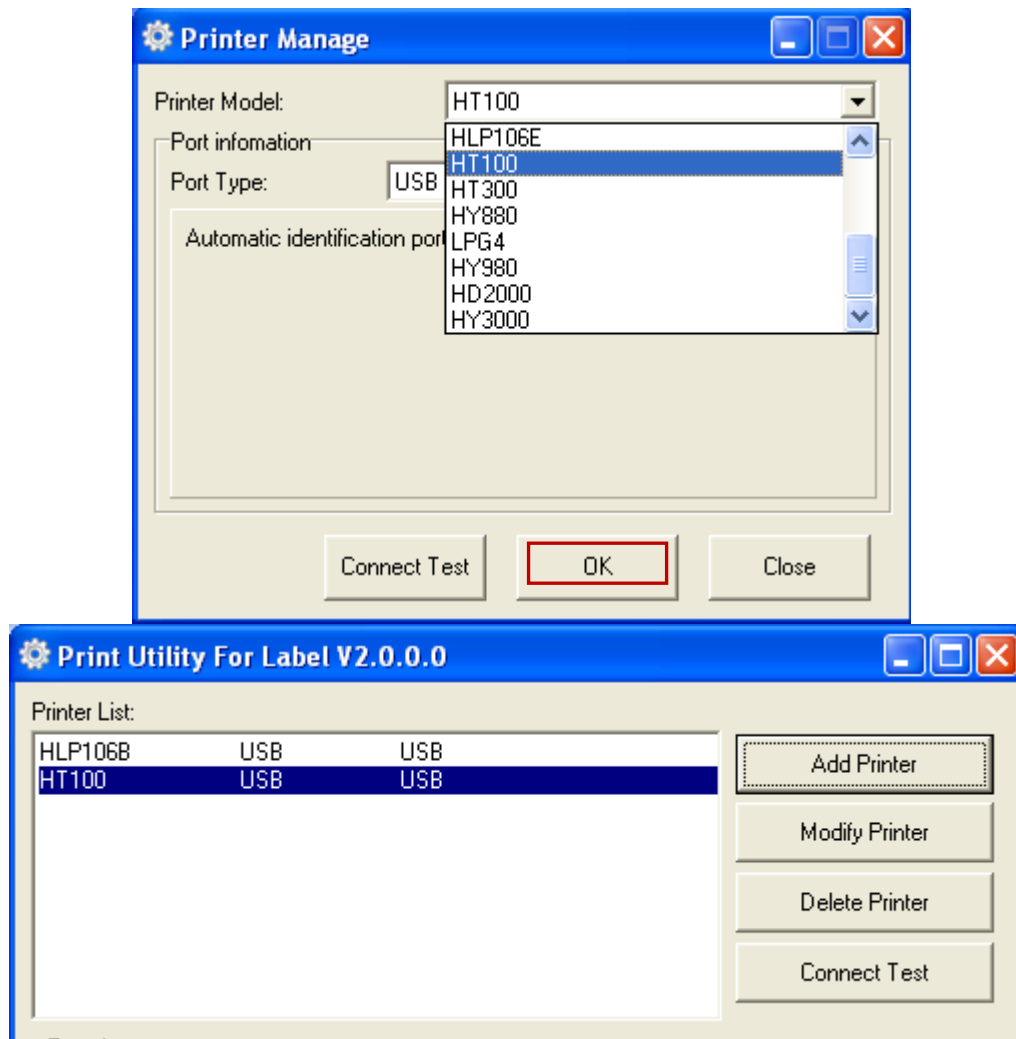
(1).Install “HPRTUtilityLabel V2.0.0.0.exe” and then open the “HPRTUtility”. Here is the windows(The screen may vary slightly by different operating systems and models).



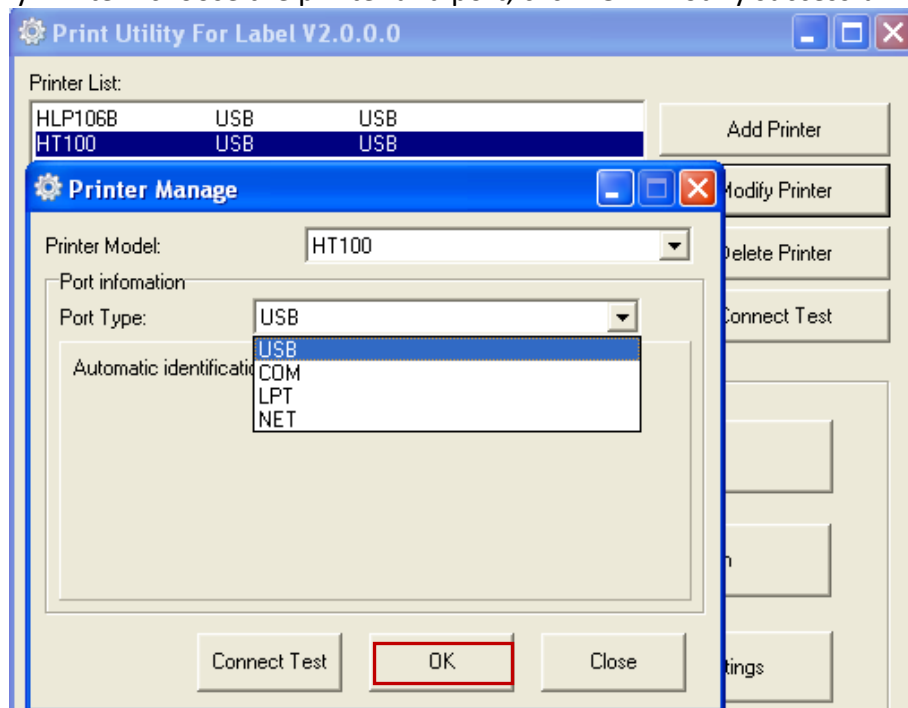
(2).Add/Modify/Delete Printer, Connect Test.



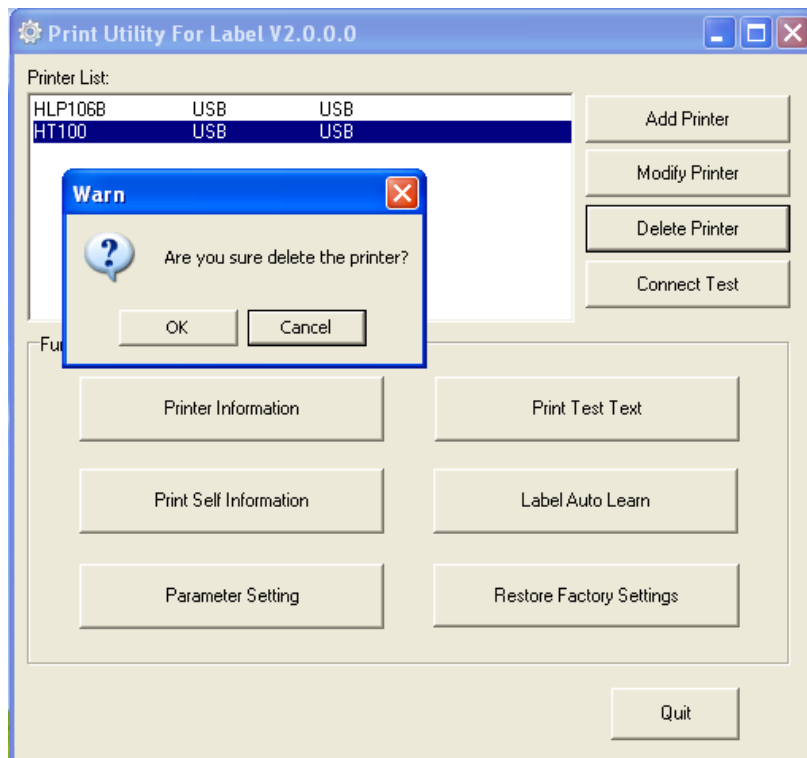
- Click “Add Printer” choose the printer and port, click “OK” add successful, check in “Printer List”.



- Click “Modify Printer” choose the printer and port, click “OK” modify successful.

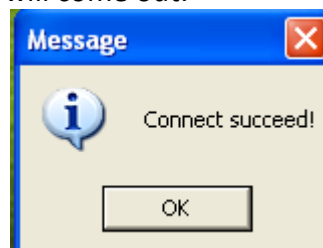


- Click “Delete Printer”, click “OK” delete the printer you chosen, click “Cancel” cancel delete printer.

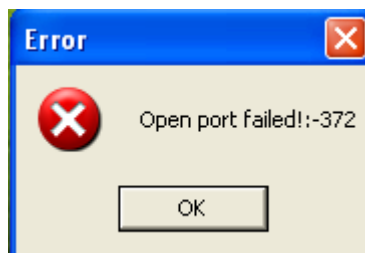


- Choose the printer you currently use, connect it with computer; Click “Connect Test” to test whether the connection is ok or not.

If connection is OK, the icon below will come out.



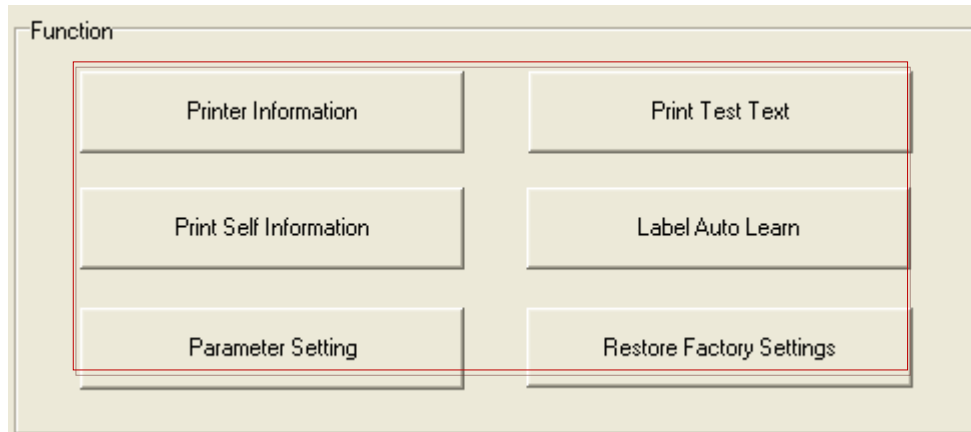
If connection fails, normally shows following icon.



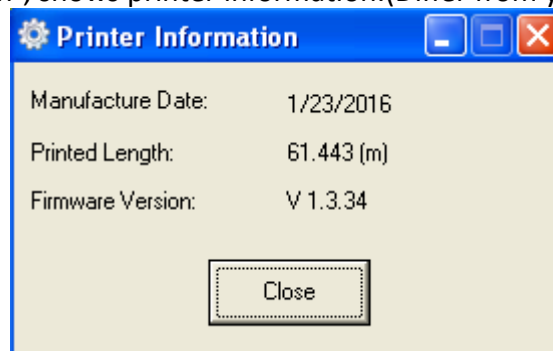
Note: Please connect your printer to power first, choose one port (depend on the printer you bought) to connecting to the PC. Connecting method see more information in Power Connection.

When connection fails, please check the connection or whether the port matches.(When USB port is used, it is better to make sure only one printer is connected)

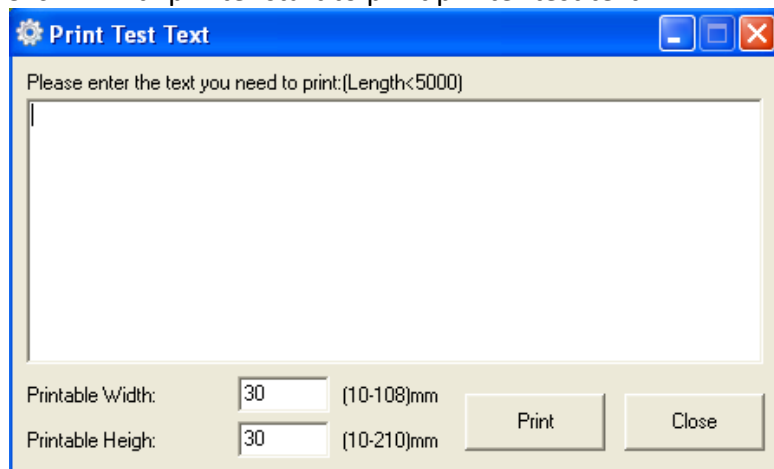
(3).Function.



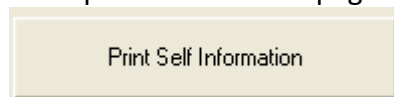
- Click “Printer Information”, shows printer information.(Differ from your printer)



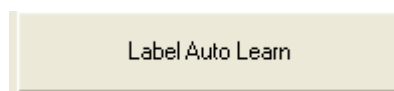
- Click “Print Test Text”, type the text you need to print→ Set up the printing range(printable width & height)→Click “Print” printer start to print printer test text.



- Click “Print Self Information”, printer print out self-test page.



- Click “Label Auto Learn” printer will carry out the calibration.



- Click “Parameter Setting”.

1) COM Port Setting:

Baud Rate:

Parity:

Stop BitS:

2)Language:

International character:

Codepage:

3)Label paper automatic position when power on:

4) Select small label (Label length less than 20mm):

5)Print type:

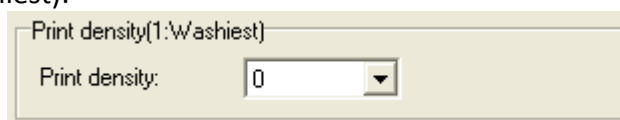
6)Print when error:

7)Display "Reprint" when reprint:

8) After stopping X mins, enable the anti-adhesive paper function:

choose range:0~255

9) Print density (1:Washiest):

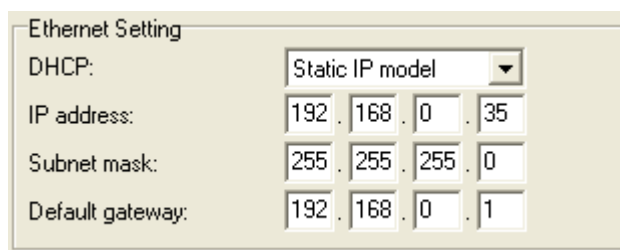


Print density(1:Washiest)

Print density:

choose range:0~15

10) Ethernet Setting:



Ethernet Setting

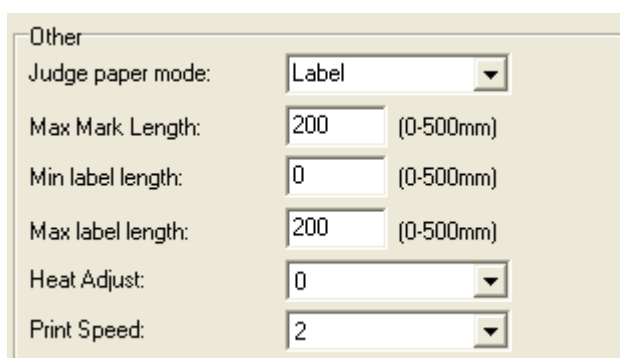
DHCP:

IP address: . . .

Subnet mask: . . .

Default gateway: . . .

11) Other:



Other

Judge paper mode:

Max Mark Length: (0-500mm)

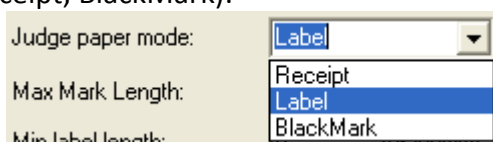
Min label length: (0-500mm)

Max label length: (0-500mm)

Heat Adjust:

Print Speed:

Judge Paper Mode(Label, Receipt, BlackMark):

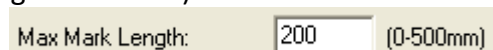


Judge paper mode:

Max Mark Length:

Min label length:

Max Mark Length(choose range:0~500mm):



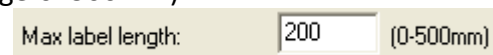
Max Mark Length: (0-500mm)

Min label length(choose range:0~500mm):



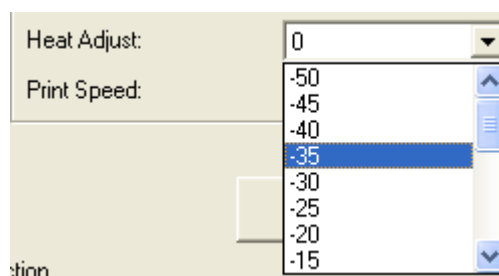
Min label length: (0-500mm)

Max label length(choose range:0~500mm):



Max label length: (0-500mm)

Heat Adjust:

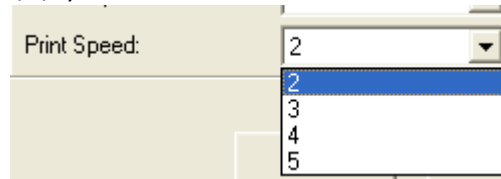


Heat Adjust:

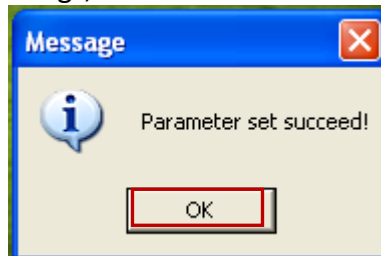
Print Speed:

tion.

Print Speed(choose range:2,3,4,5):



9)Click “Set” save all the above settings, click “ok” back to the main menu.

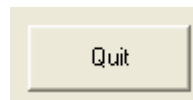


Click “Close” back to the main menu and all the settings canceled.

●Click “Restore Factory Settings”, click “OK” printer restore factory settings, click “Cancel” cancel restore factory settings.



(4).Click “Quit”, finish printer settings.



Chapter 7 Seagull Windows Driver Installation

7.1 Introduction

This chapter provides information on installation according to PC operating system (OS).

This driver support for these following operating systems:

- Microsoft Windows 10 (32 bit/64 bit)
- Microsoft Windows 8 (32 bit/64 bit)
- Microsoft Windows 7 SPI (32 bit/64 bit)
- Microsoft Windows Vista SP2 (32 bit/64 bit)
- Microsoft Windows XP Professional SP3 (32 bit)
- Microsoft Windows Server 2012(64 bit)
- Microsoft Windows Server 2008 R2
- Microsoft Windows Server 2008 SP2(32 bit/64 bit)
- Microsoft Windows Server 2003 R2 SP2(32 bit/64 bit)

7.2 Installation Preparation

Download Seagull Windows Driver application program. Latest version please see our website.

7.3 Installation



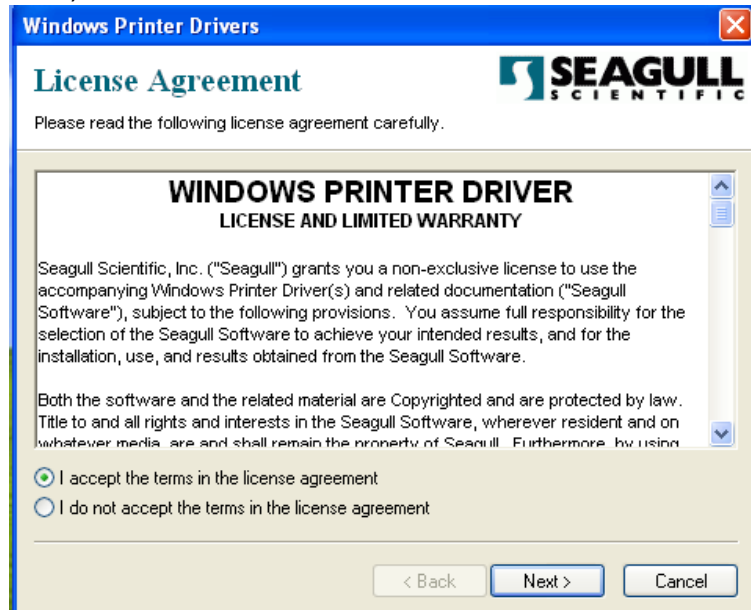
Warning: Under different operating system, the screen has slight difference. Please operate it according to the tips. Take HPRT HT100 (Windows XP) as example. Recommend to close security software before installation in case of preventing installation.

1. Select one interface to connect your printer to computer.
2. Turn on the printer check if it successfully connected to computer.

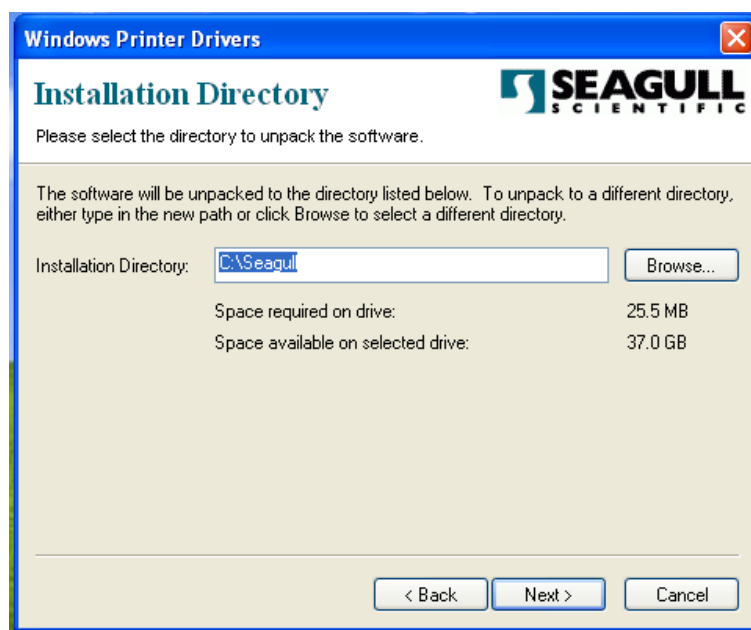


3. Double click Seagull Windows Driver.

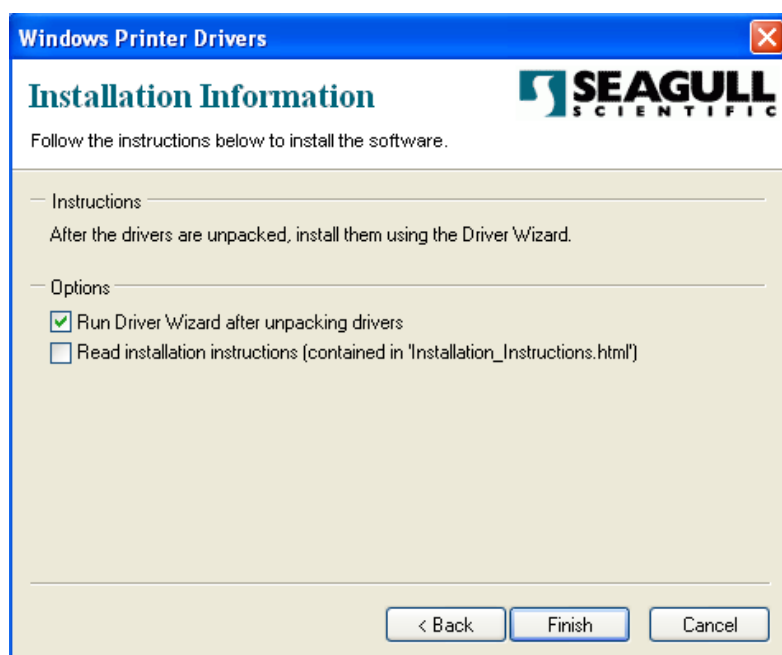
4. After agree to the EULA, click "Next".



5. Select a directory on the computer to unpack the driver or accept the default location then click "Next".



6. Click "Finish".

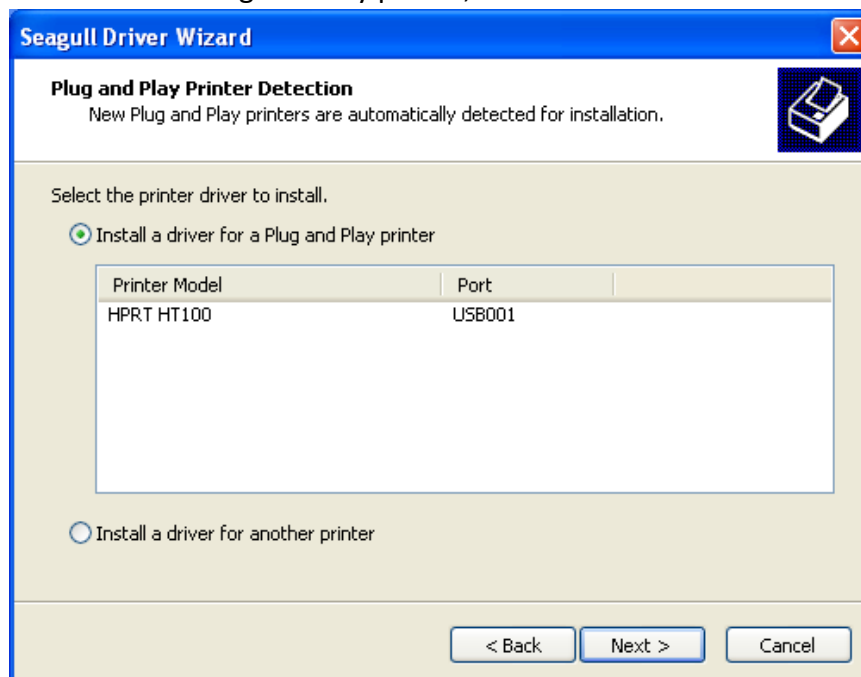


7. Select "Install printer drivers" then click "Next".

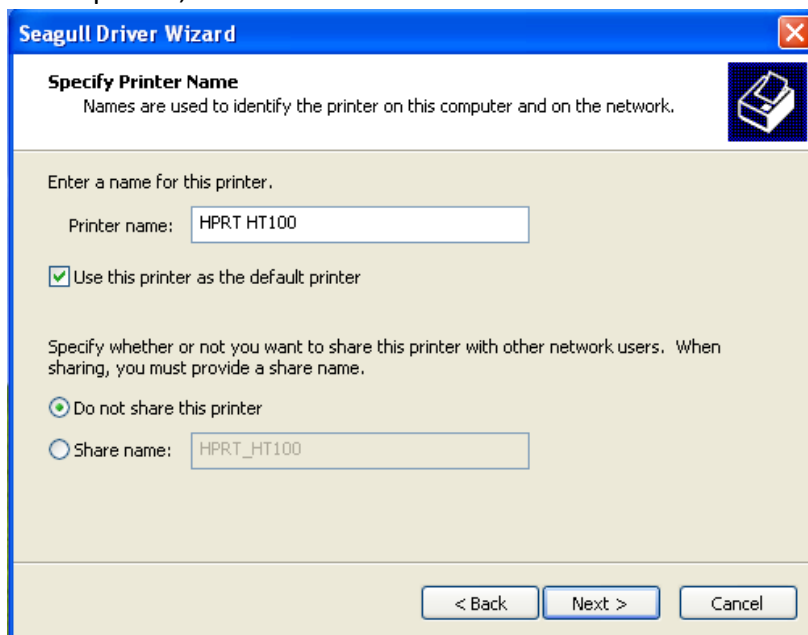


Note: Connect your printer to computer, can automatically detect and install. (Take USB for example)

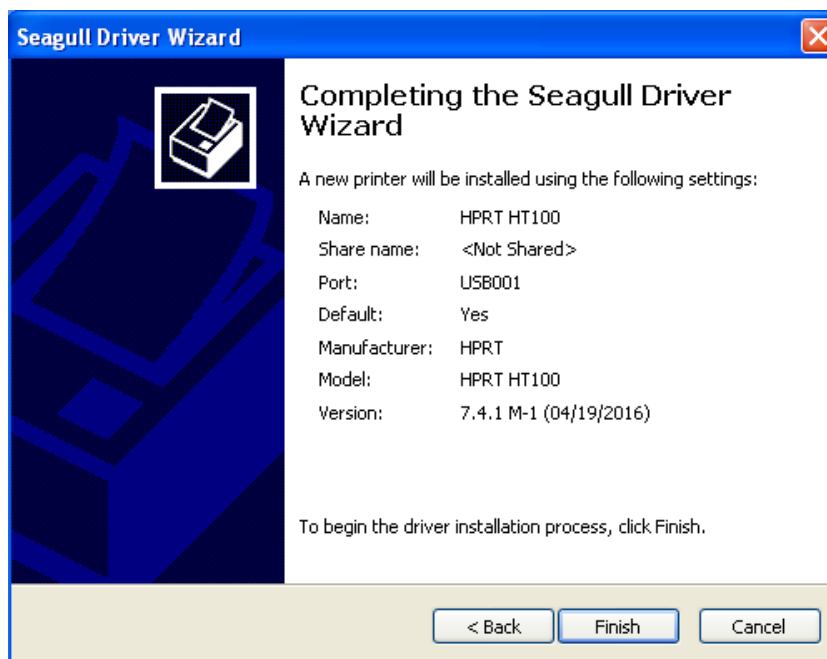
8. Select "Install a driver for a Plug and Play printer, click "Next".



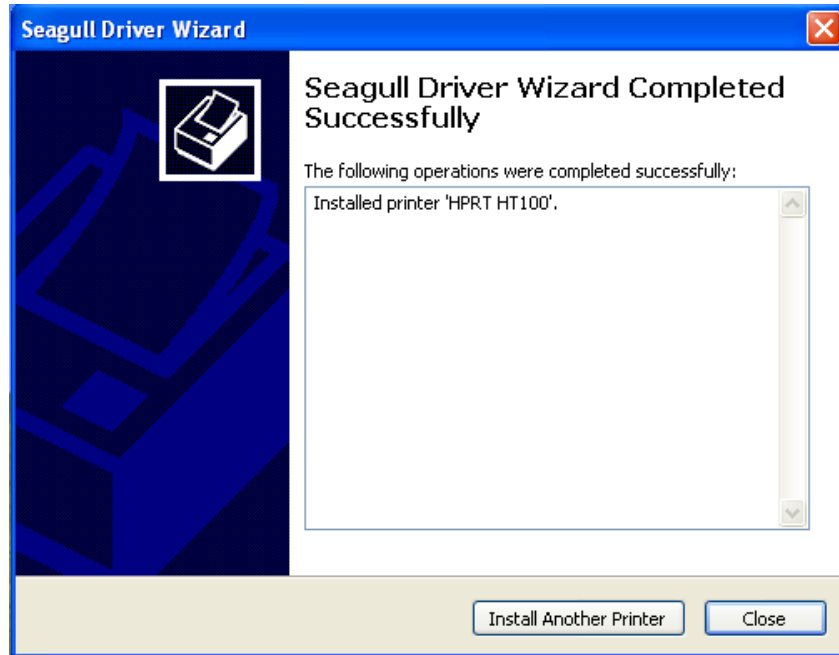
9. Enter a name for this printer, click "Next".



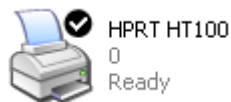
10. Click "Finish".



11. Click "Close", the HPRT HT100 Label printer driver installed successfully.



12. After installation, the icon will be found in "Start" → "Printers and Faxes".



Note:

- 1. If you already installed the driver (No matter what kind of port), when you connect the printer with computer, it will create a USB port automatically.**
- 2. Any problems please use our utility in the CD.**

Chapter 8 BarTender® Ultralite Installation

8.1 Introduction

This chapter provides information on BarTender® installation according to PC operating systems(OS).

This label design software is available in two versions:32-bit and 64-bit.


8.2 Installation Preparation

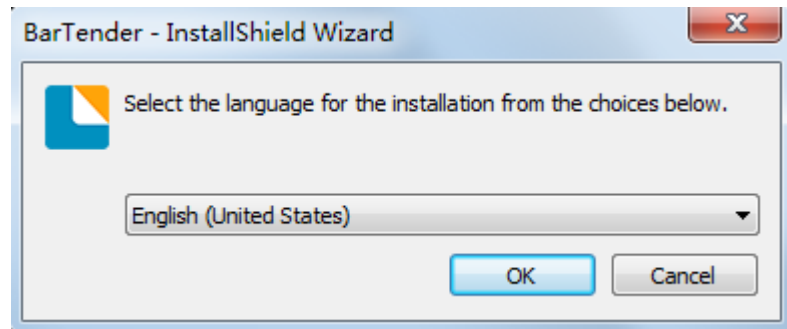
Download BarTender® application program.

8.3 Installation

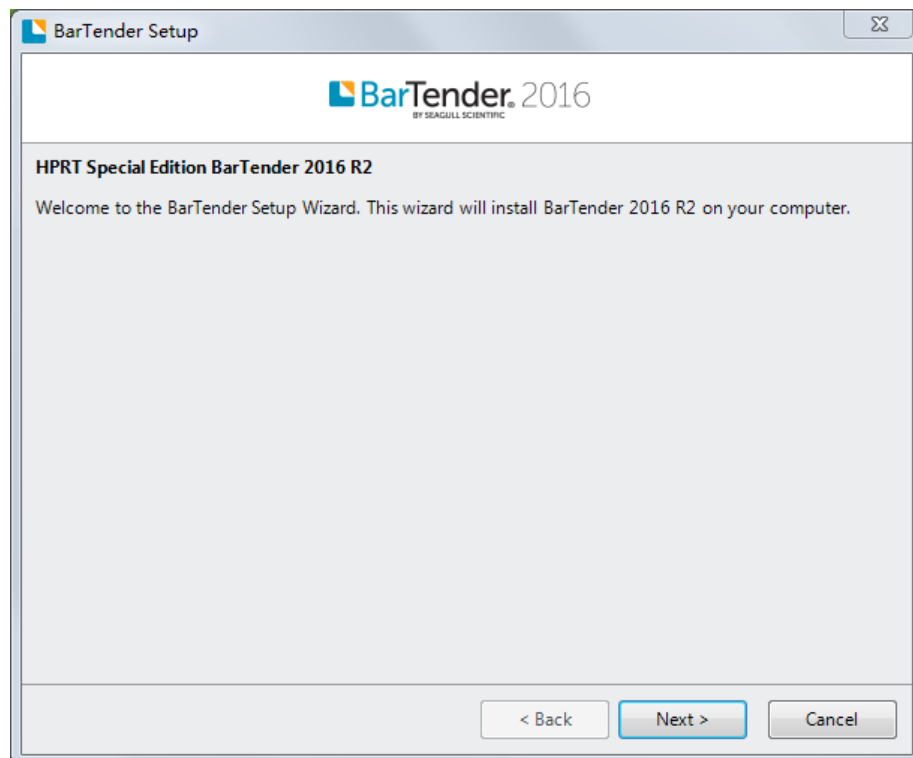


Note : Under different operating system, the screen has slight difference. Please operate it according to the tips. Take Windows 7 as example. (Recommend to close security software before installation in case of preventing installation)

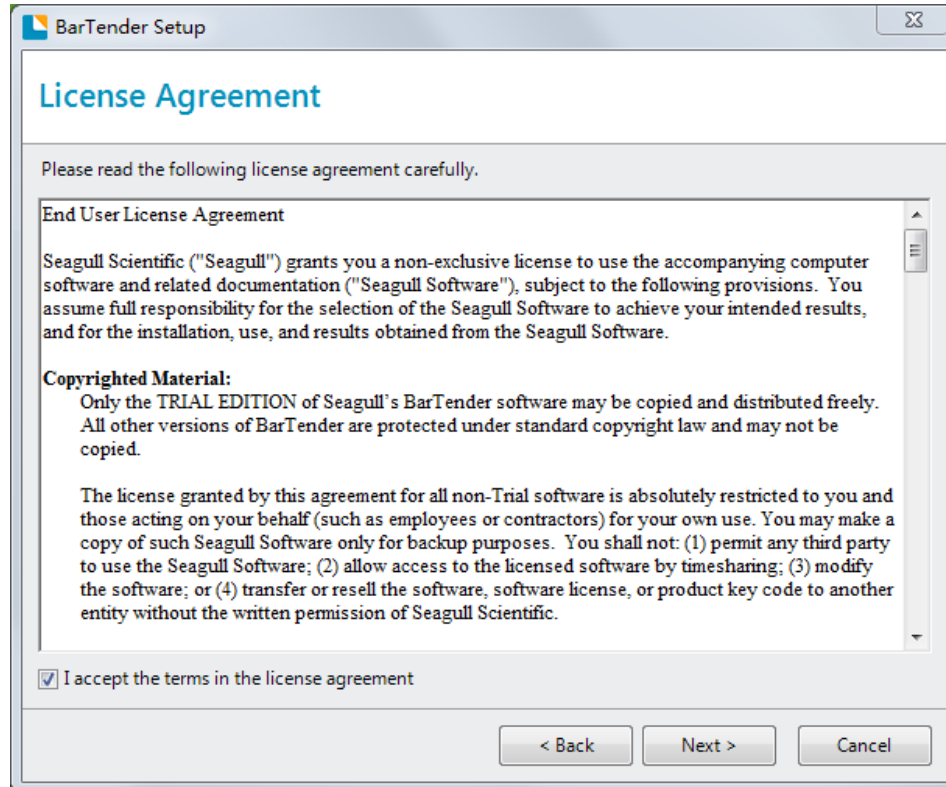
1. Double click application program .
2. Select language, then click "OK".



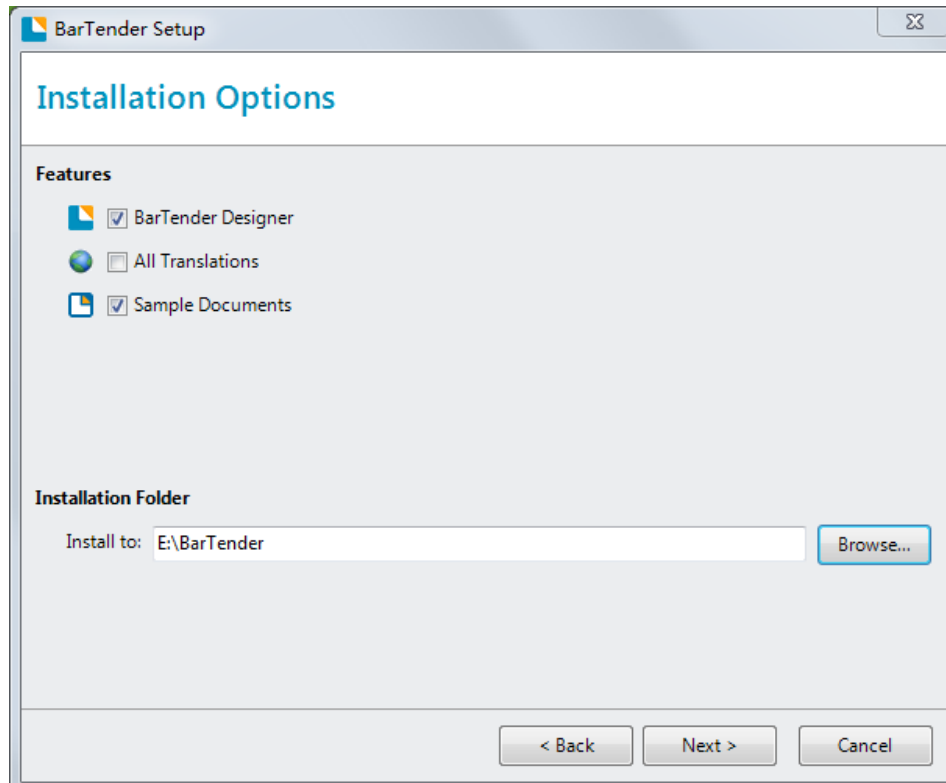
3. Click "Next".



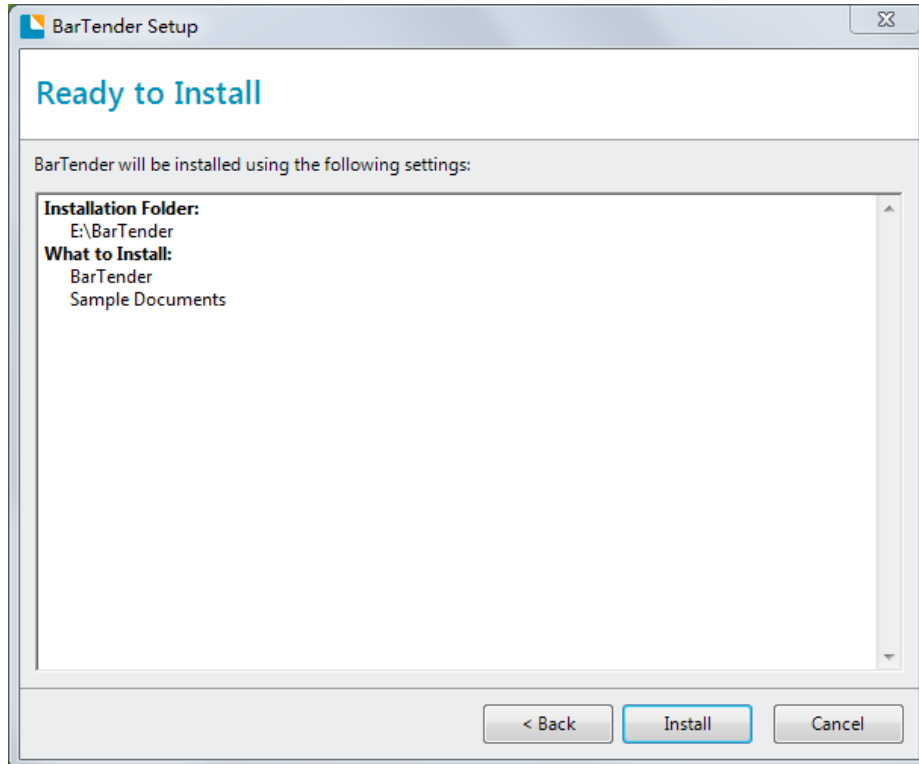
4. Read and accept the license agreement, then click "Next".



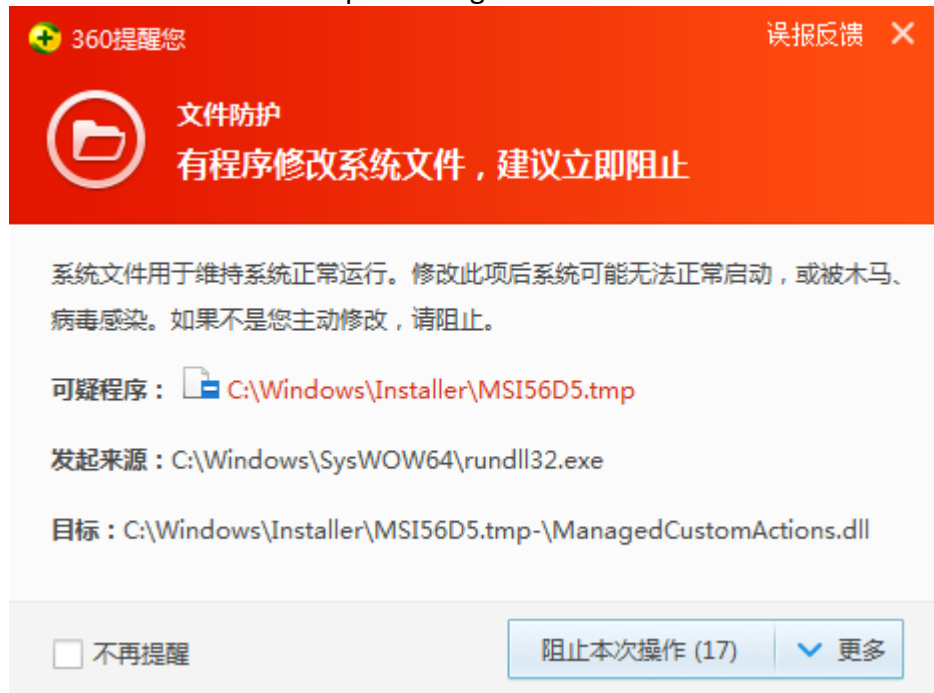
5. Select "Features" and "Installation Location" then click "Next".



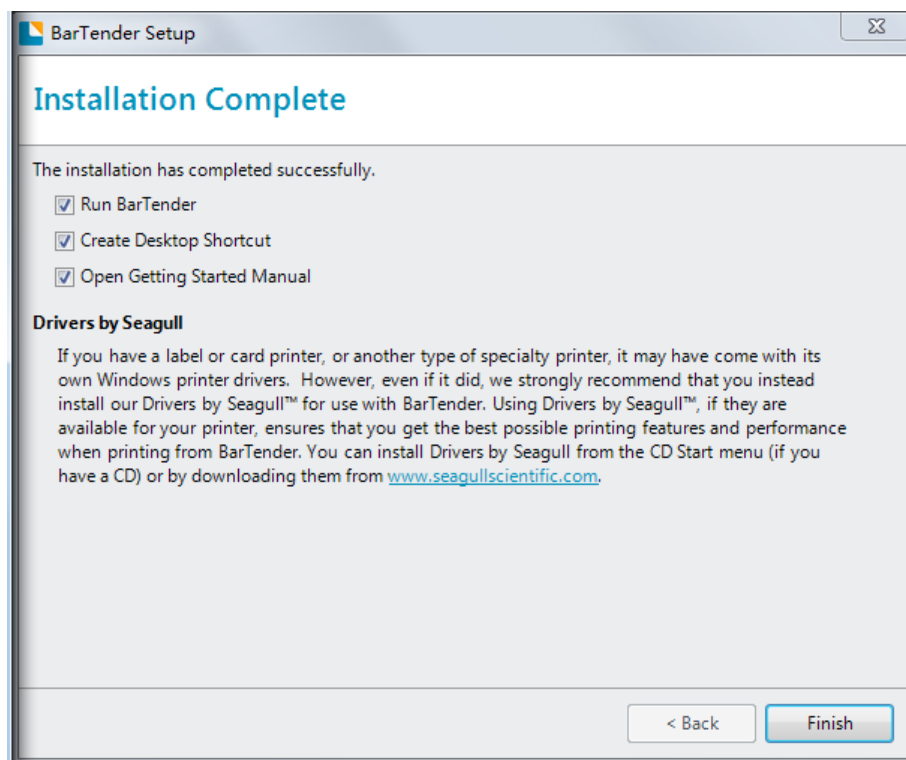
6.Click "Installation".



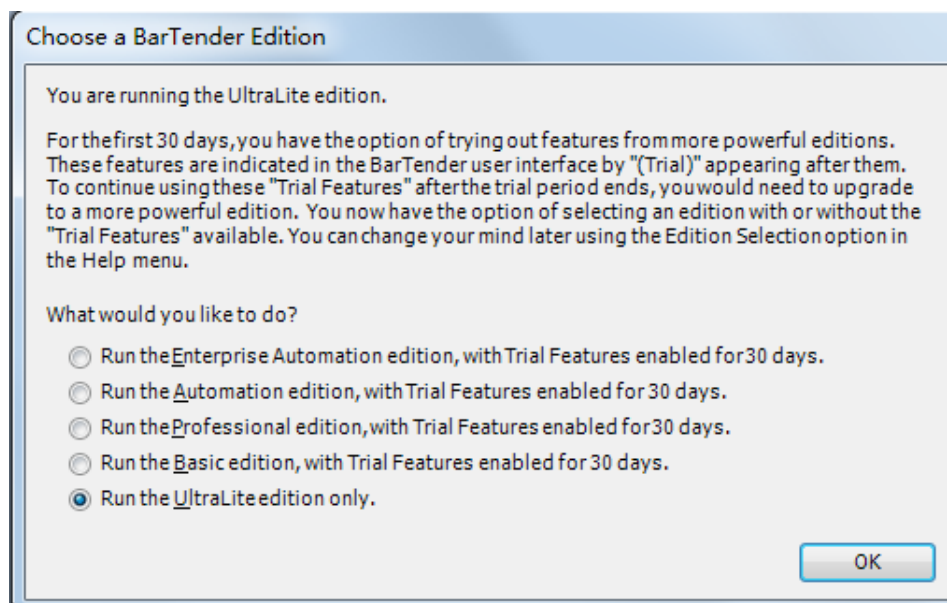
7.If occurs following windows, please choose "Allow this operation", or you may close security software before installation in case of preventing installation.



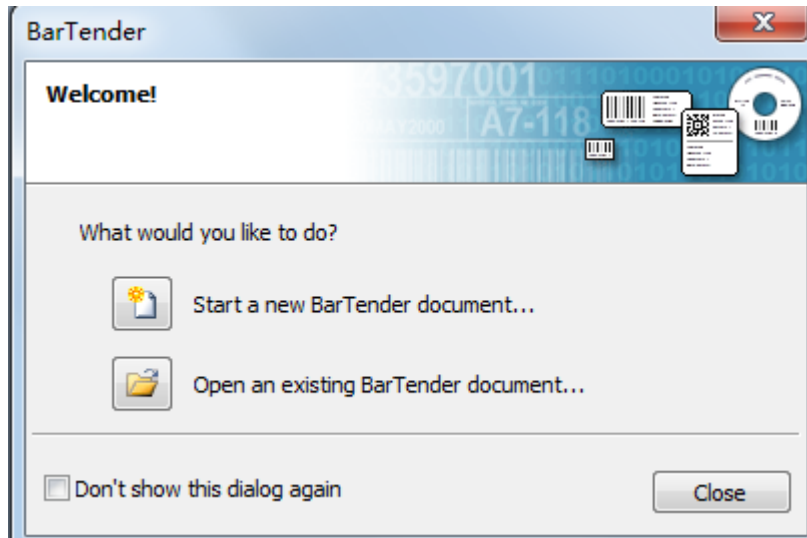
8. Click "Finish".



9. Select the edition you need (can be changed according to your need while using) ,then click "OK".



10. Click "Close", BarTender® installed successfully.



11. Back to desktop, you may see BarTender® icon, double click it to get down to use.

