



T-10/T-20 LABEL REWINDER  
USER GUIDE

# DOCUMENT DESCRIPTION

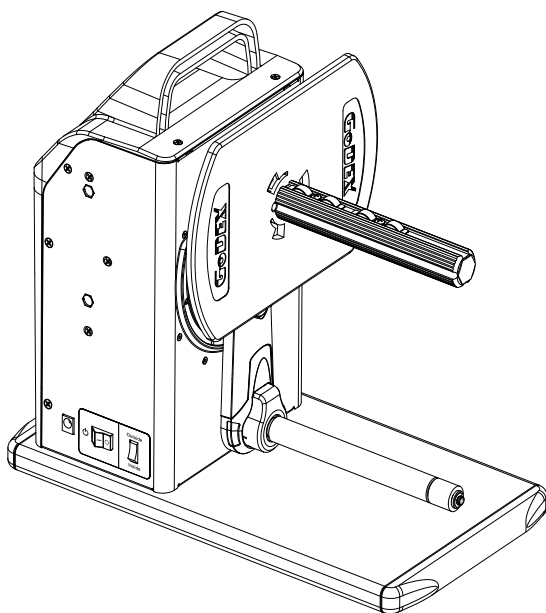
T-10/T-20 Label Rewinder  
Version :Rev. B  
Issue Date :2018.09.18  
Part NO. :313-041000-403

# CONTENTS

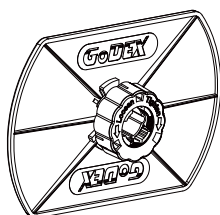
- 1      Box Contents**
- 2      Getting to Know Your T-10/T-20 Rewinder**
  - Device Overview
- 3      Setting Up the Rewinder**
  - Connection
  - Loading the Label
  - Install the Plate
  - Remove the Plate
  - Label Core in Different Sizes
  - Match Up the Empty Label Core and Core Adapter
  - The Modes of Rewinding
- 4      What's the Status of the Rewinder**
  - LED Indicator
  - When the Rewinder is Full
- 5      Troubleshooting**
  - Sensing Error
  - Idle Load
- VR(Speed Adjustment)**
- Appendix**
  - Product Specifications

# 1 BOX CONTENTS

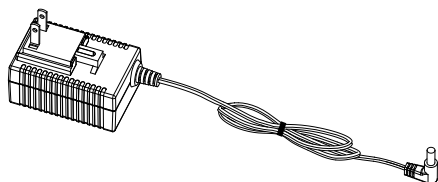
- T-10/T-20 Label Rewinder



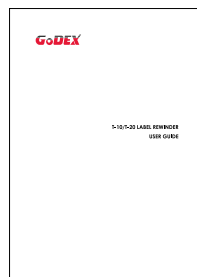
- Paper Stop Plate



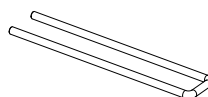
- Power Adapter



- User Guide

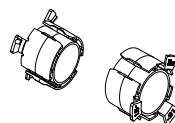


- Paper Clip

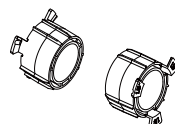


- 1.5'' Adapter

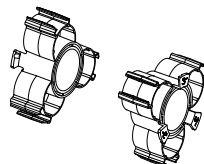
38 mm



40 mm



- 3'' Adapter

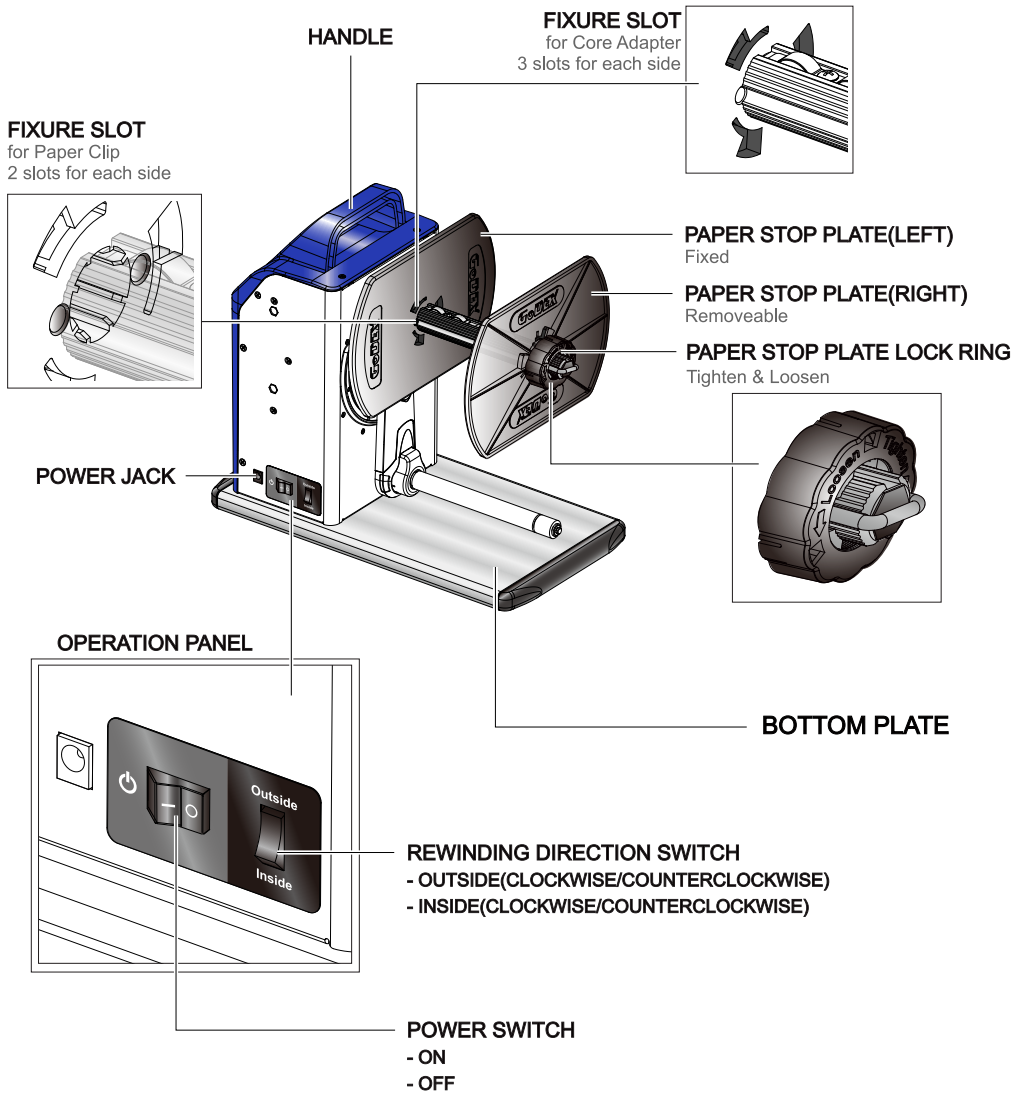




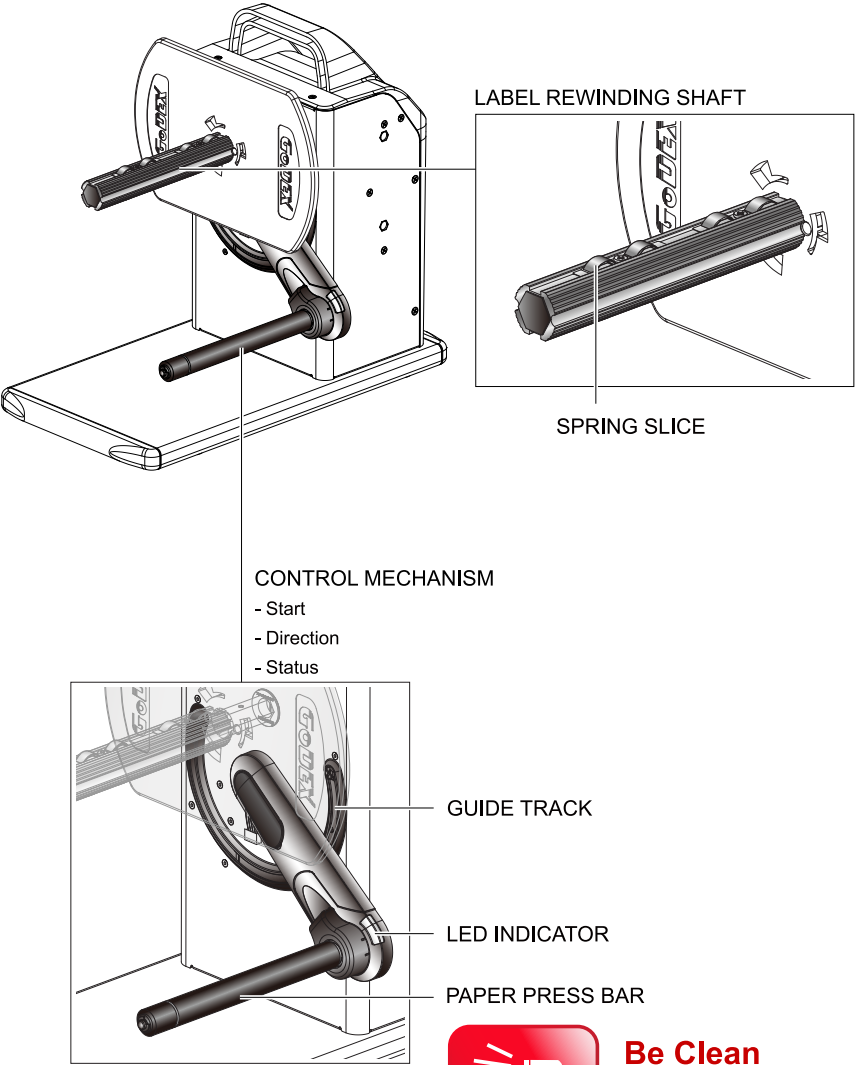
## 2 GETTING TO KNOW YOUR T-10/T-20 REWINDER

### Device Overview

- Front View



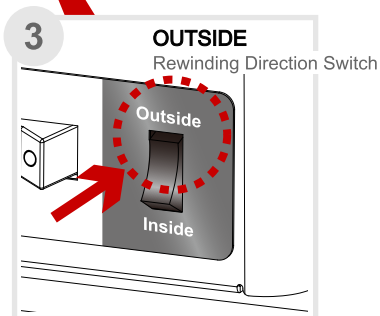
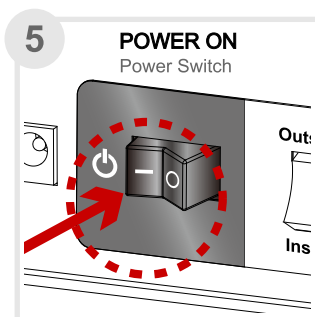
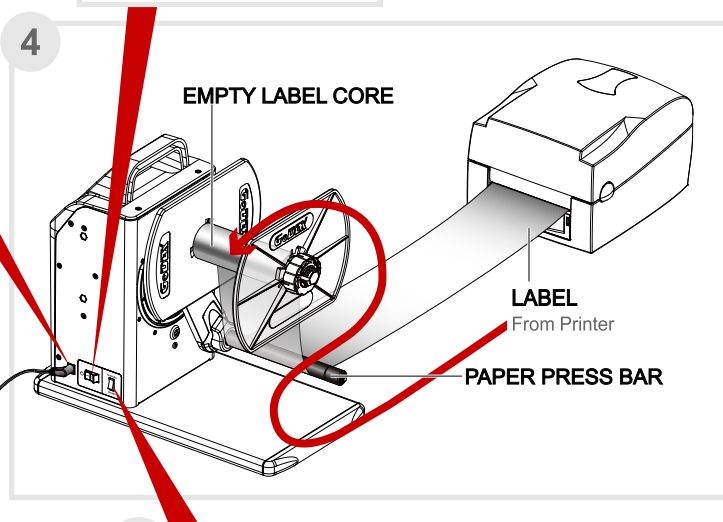
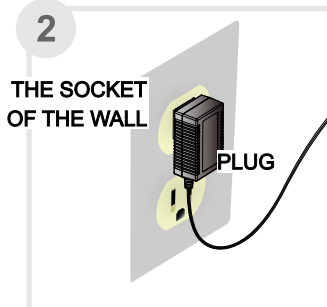
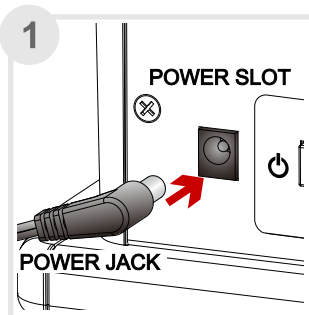
- Rear View



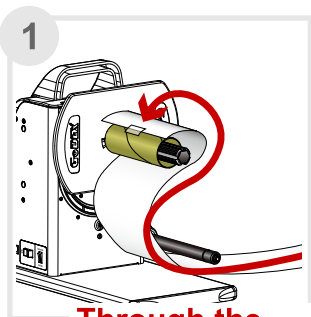
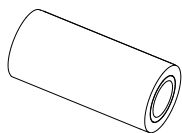
**Be Clean**

# 3 SETTING UP THE REWINDER

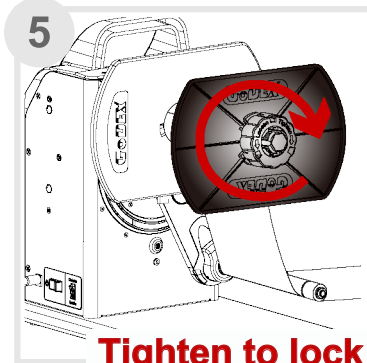
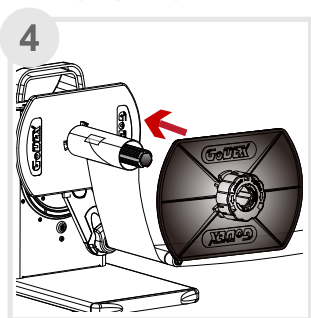
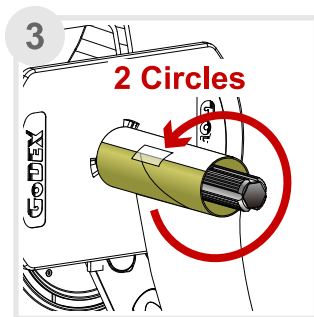
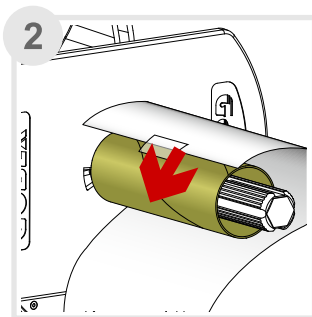
## Connection



## Loading the Label Label Stock



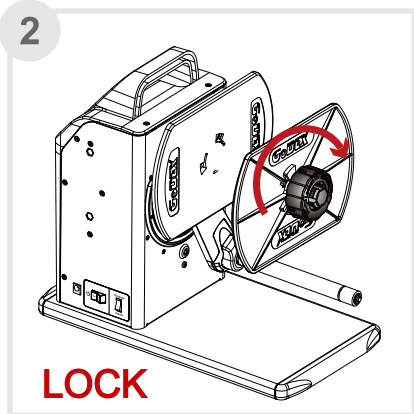
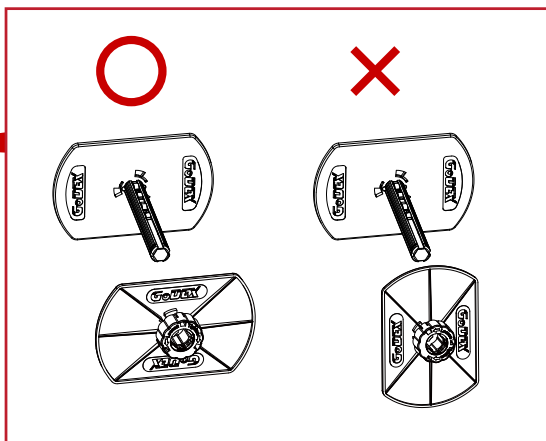
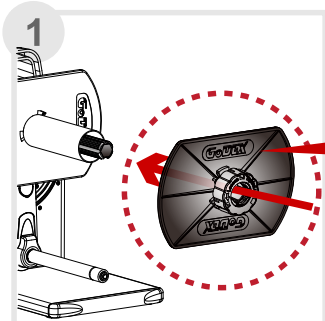
**Through the  
paper press bar**



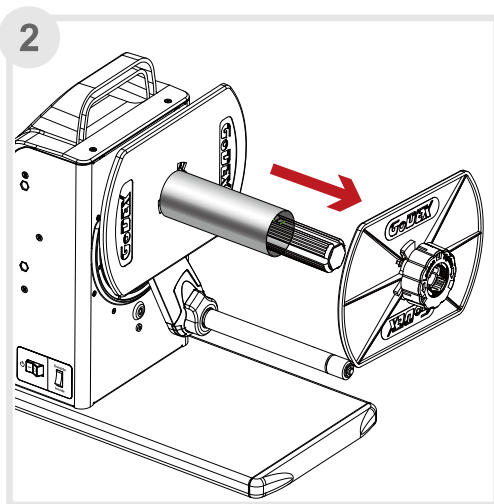
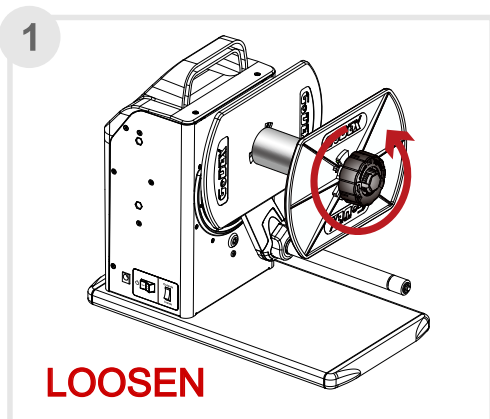
**Tighten to lock**

# Install and Remove the Plate

## Install



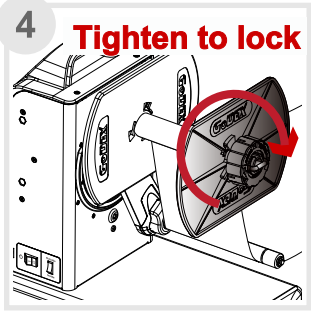
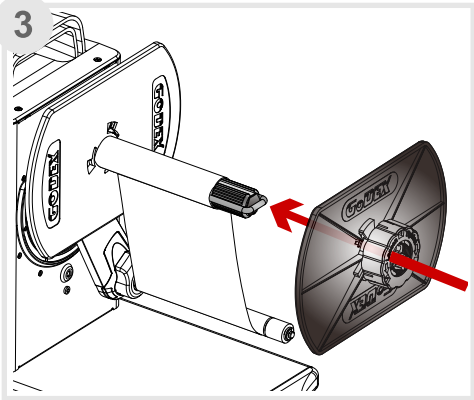
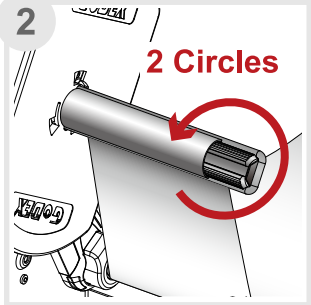
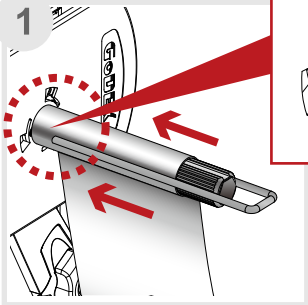
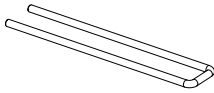
## Remove



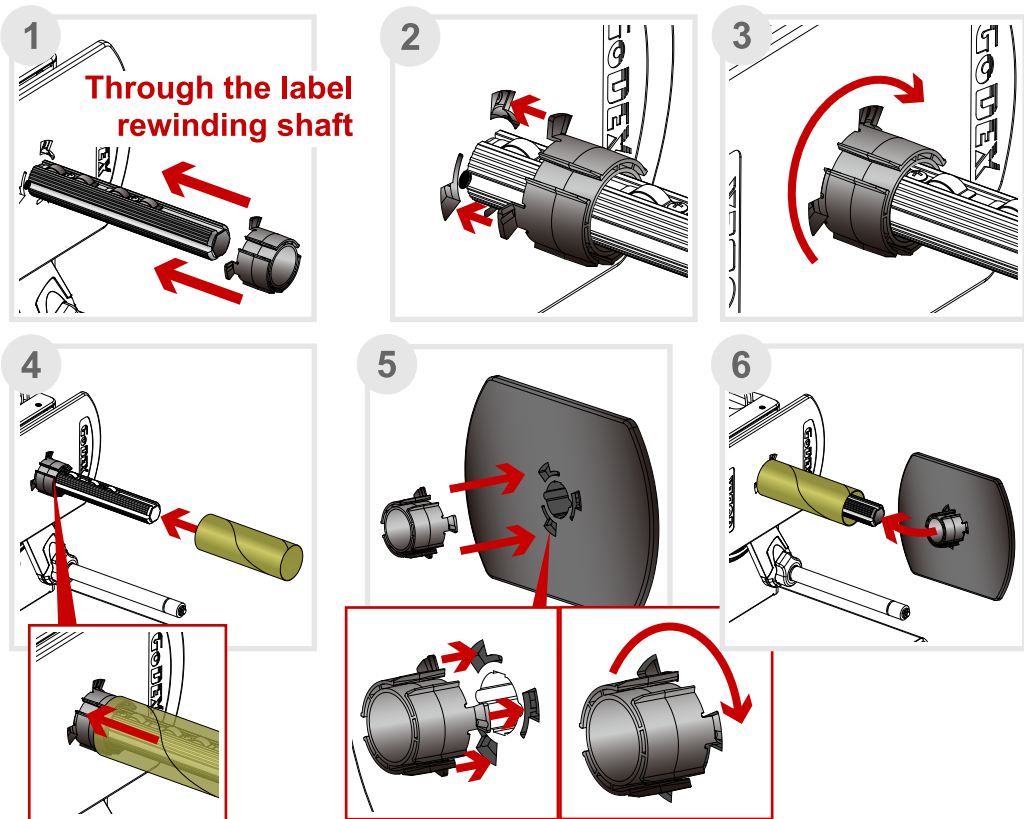
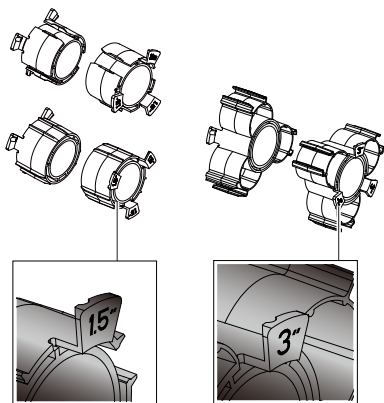
Label core in different sizes

Paper Clip

for 1", to fix label in position.

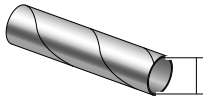
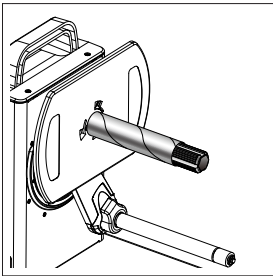


**Core Adapter**  
for 1.5" and 3" Empty label core.



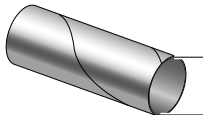
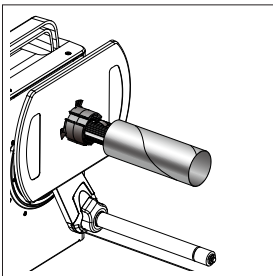
# Match up the empty label core and core adapter

1'' Empty Label Core  
with Label rewinding shaft.



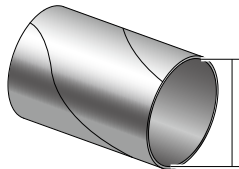
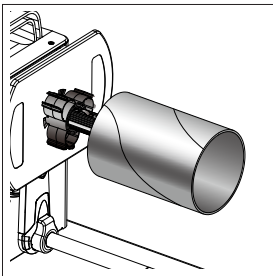
$\Phi 25.2$  to  $\Phi 25.6$  mm  
Tolerable size of inside diameter  
for Label Rewinding Shaft

1.5'' Empty Label Core  
with 1.5'' Core adapter.



$\Phi 37.4$  to  $\Phi 38$  mm or  $\Phi 40$  to  $\Phi 40.6$  mm  
Tolerable size of inside diameter  
for 1.5'' Core Adapter

3'' Empty Label Core  
with 3'' Core adapter.

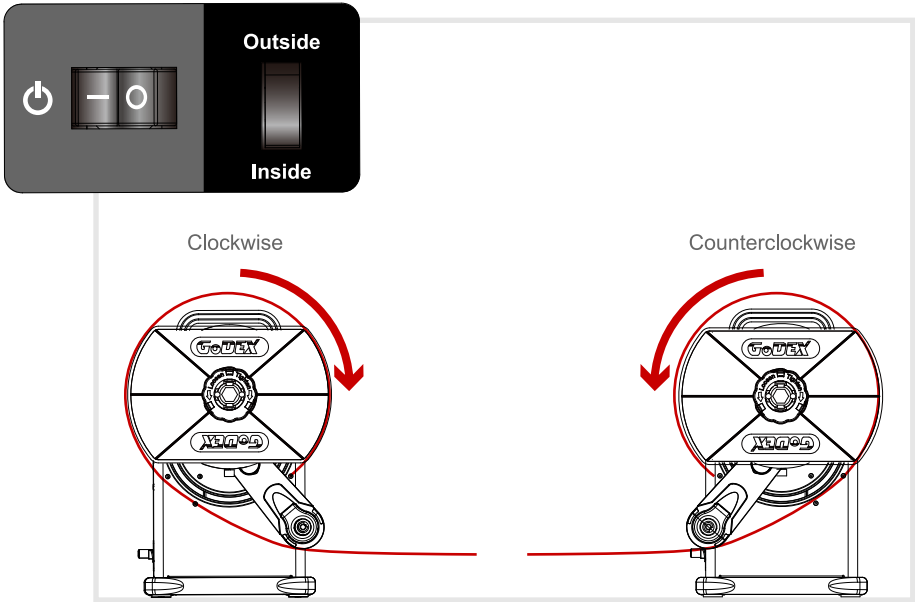
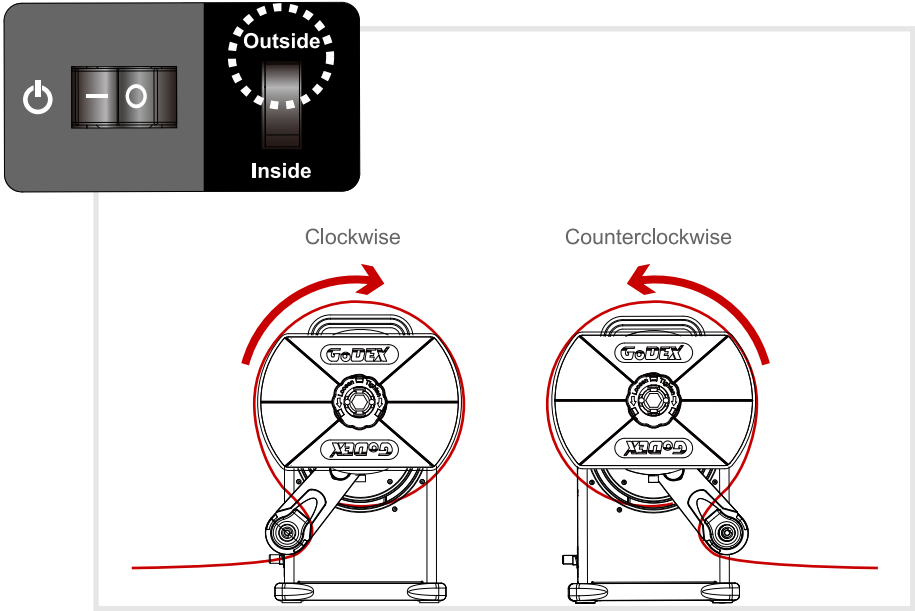


$\Phi 76$  to  $\Phi 76.6$  mm  
Tolerable size of inside diameter  
for 3'' Core Adapter

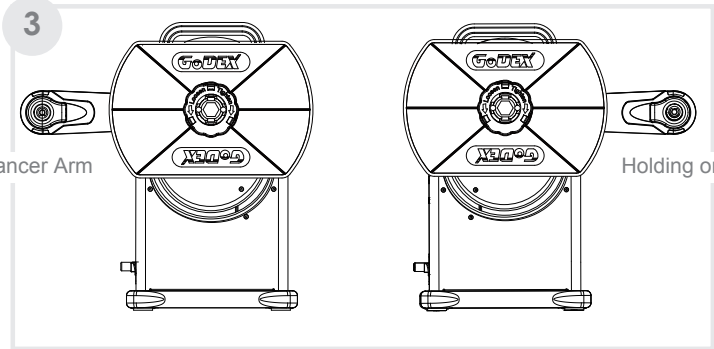
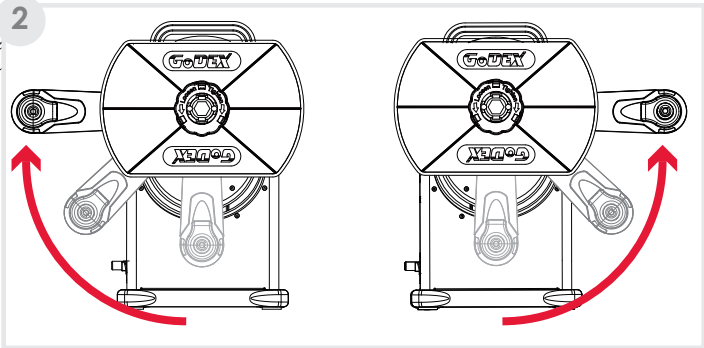
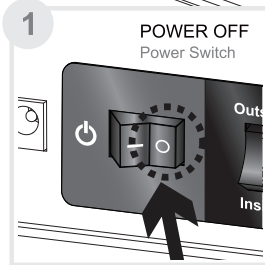
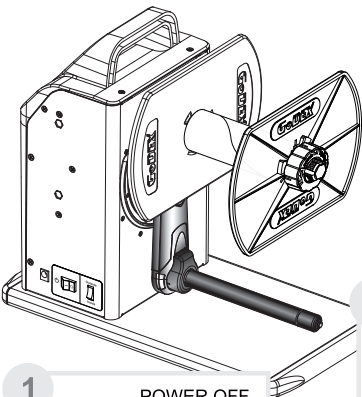


The Modes of Rewinding

Outside

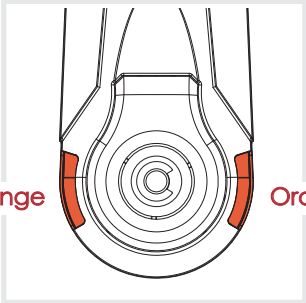
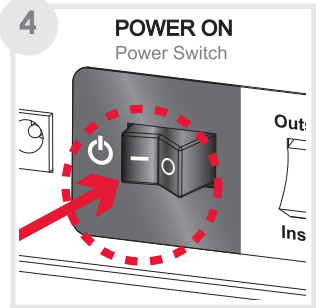


Motor Fixed Speed Mode



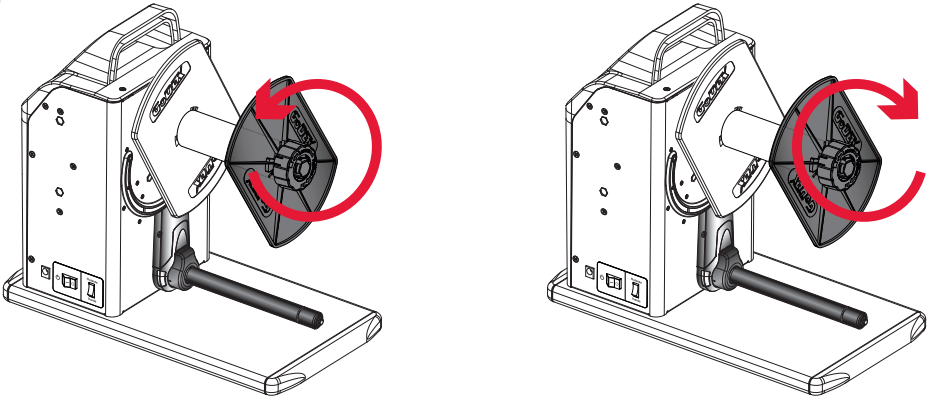
Holding on the Dancer Arm

Holding on the Dancer Arm



Orange

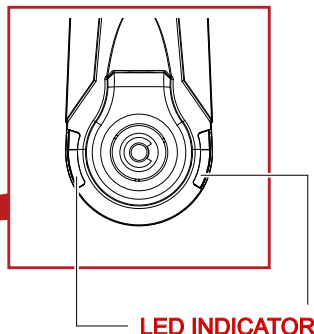
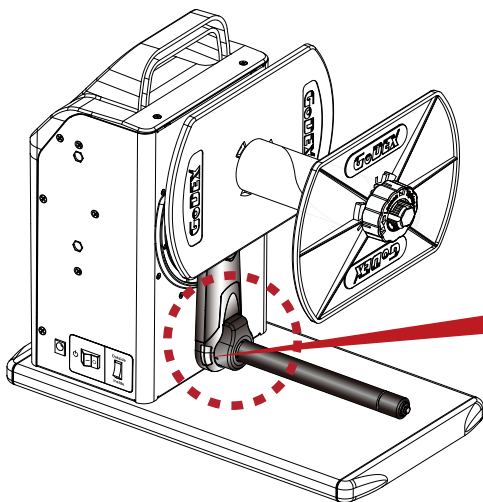
Orange

**To Set up:**

1. Make sure the power is switched off.
2. Place the Dancer Arm at its highest point on either side of the rewinder.
3. Turn on the power while holding on the Dancer Arm.  
Once the power is on, an orange light should light up and that will bring the rewinder into the "Motor Fixed Speed Mode."
4. Release the Dancer Arm and the rewinder will be rewinding at a fix speed.
5. To stop, switch off the power.

# 4 WHAT'S THE STATUS OF THE REWINDER

## LED Indicator

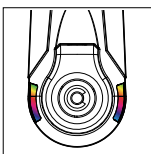


LED INDICATOR

STATUS

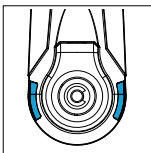
LED INDICATOR

Power ON



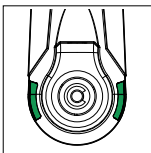
Flash

Outside



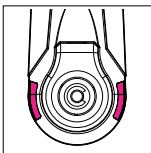
Blue

Inside



Green

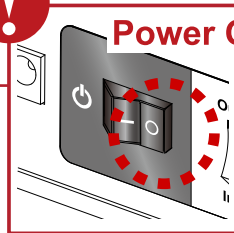
Error / Alert



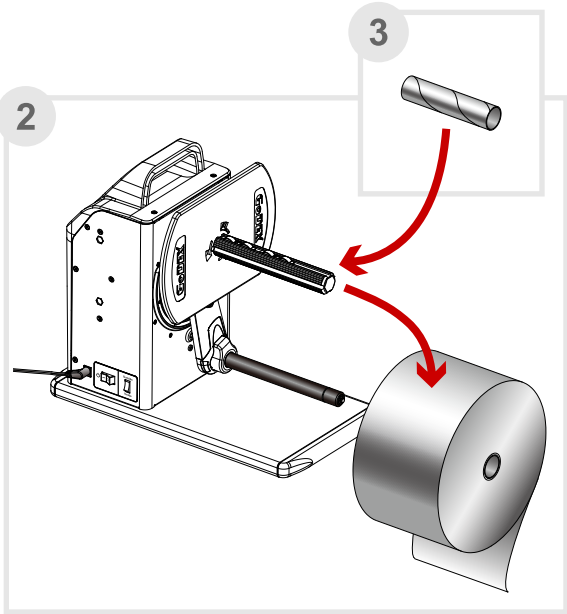
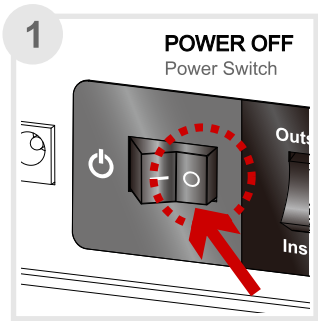
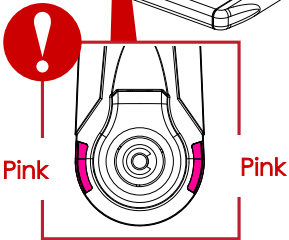
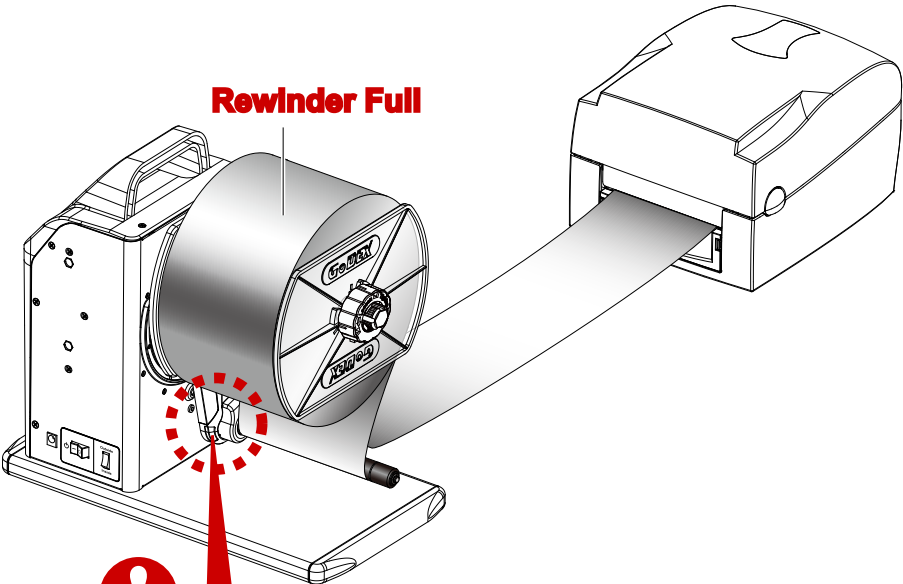
Pink



Power OFF

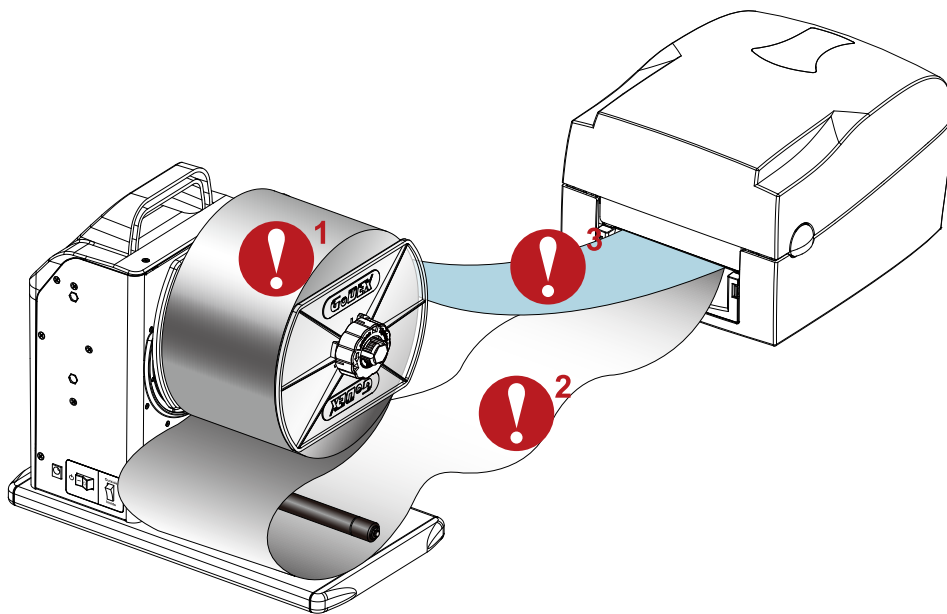


When The Rewinder Is Full



# 5 TROUBLESHOOTING

## Error / Alert



### Error /Alert

### Description



#### Paper Full

refer to "When The Rewinder Is Full" on Chapter 4



#### Sensing Error

refer to "Sensing Error" on Chapter 5

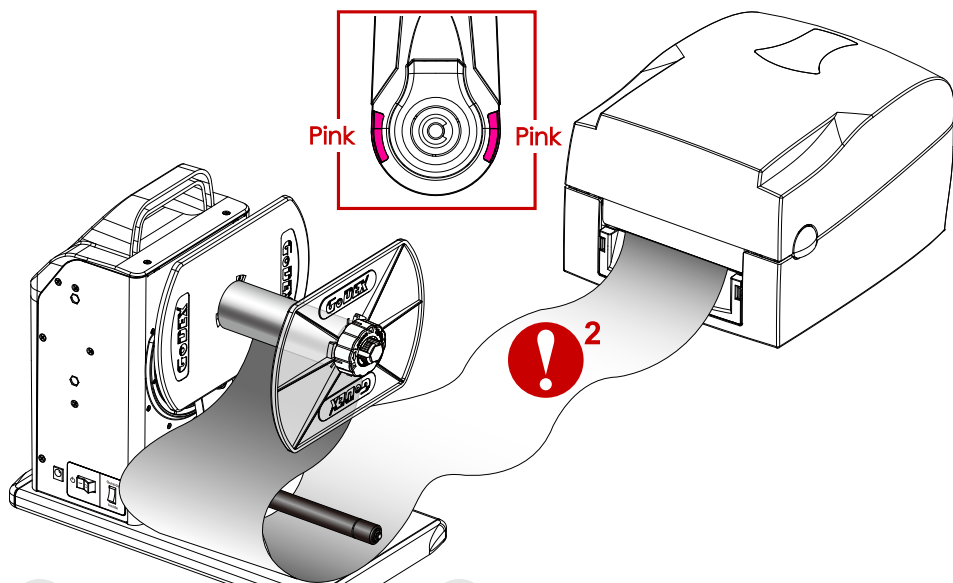


#### Idle Load

refer to "Idle Load" on Chapter 5

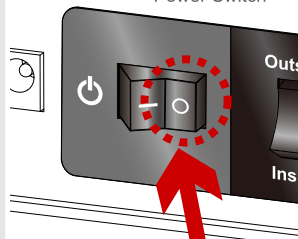


## Sensing Error



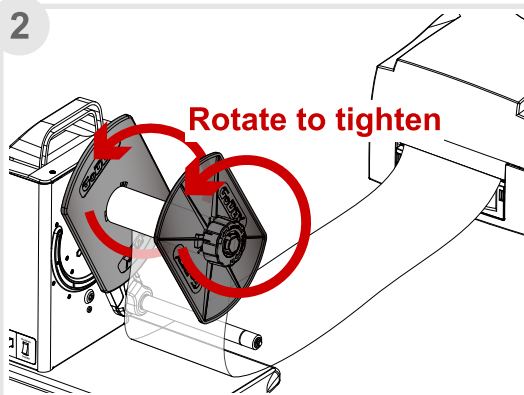
1

POWER OFF  
Power Switch

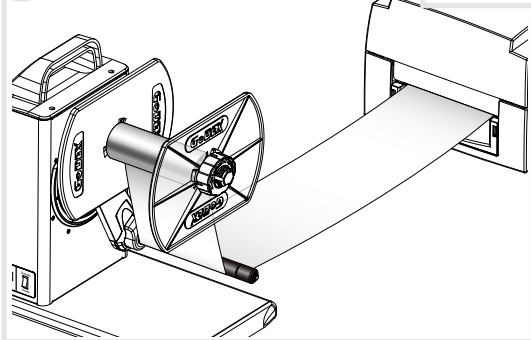


2

Rotate to tighten

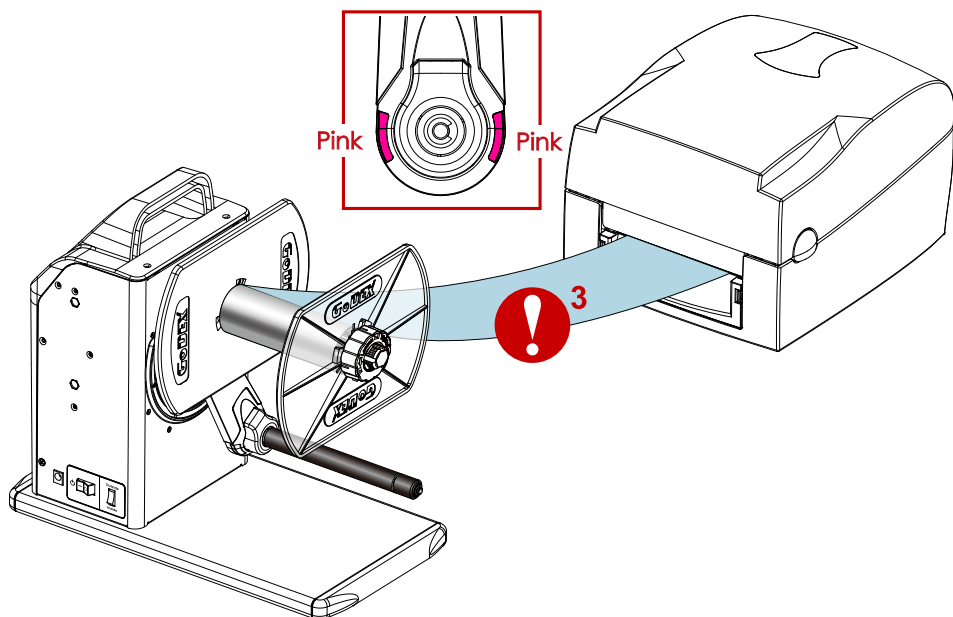


3



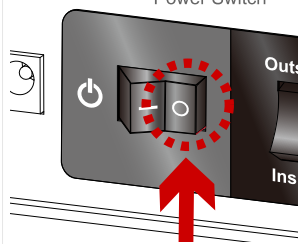


Idle Load

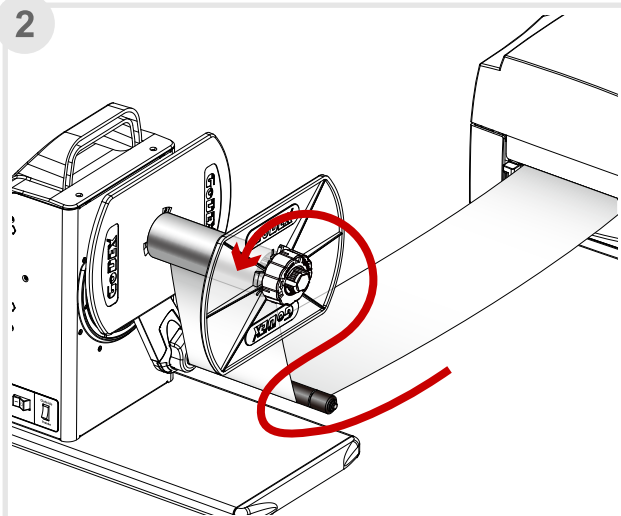


1

**POWER OFF**  
Power Switch



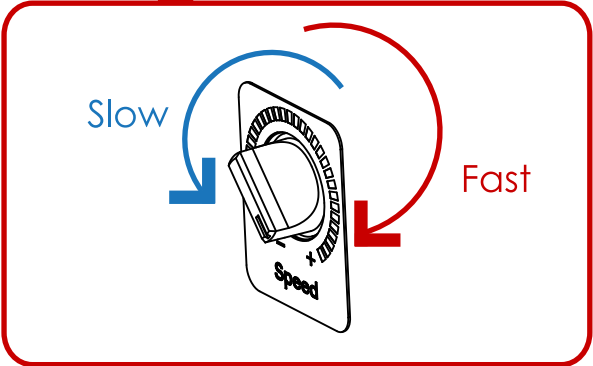
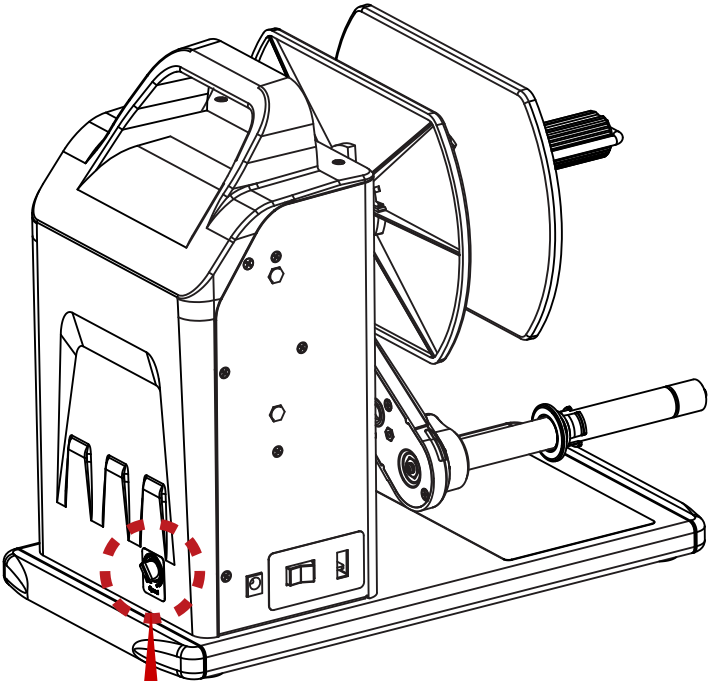
2





T-10/T-20 USER GUIDE

VR(Speed Adjustment)



APPENDIX

PRODUCT SPECIFICATIONS

Model		T10 Label Rewinder
Paper width		4.72" (Max)
Rewind Speed		Auto mode : 14 IPS (MAX) Fixed : 2~15 IPS
Label Roll		8" (Max.)
Core Roll		Coreless 1" (25.2 to 25.6 mm) 1.5" (37.4 to 38 mm) 1.5" (40 to 40.6 mm) 3" (76 to 76.6 mm)
Label Roll Weight		5 Kg
Rewinding		Label Inside/Outside
Switches		Rewind
Motor		Hybrid Motor
Power		100~240VAC 24W, 24V Adapter
Environment	Operating Temp.	41°F to 104°F (5°C to 40°C)
	Storage Temp.	-4°F to 122°F (-20°C to 60°C)
Humidity		10-85% (non-condensing RH)
Size(H*W*D)		303 mm x 180 mm x 349 mm
Agency Approvals		CE, FCC Class A
Weight		5 Kg (11 lb)

\* We do not recommend to rewind die-cut labels. Labels might be torn under certain circumstances.

APPENDIX

PRODUCT SPECIFICATIONS

Model		T20 Label Rewinder
Paper width		7" (Max.)
Rewind Speed		Auto mode : 14 IPS (max) Fixed : 2~15 IPS
Label Roll		6" (Max.)
Core Roll		Coreless 1" (25.2 to 25.6 mm) 1.5" (37.4 to 38 mm) 1.5" (40 to 40.6 mm) 3" (76 to 76.6 mm)
Label Roll Weight		5 Kg
Rewinding		Label Inside/Outside
Switches		Rewind
Motor		Hybrid Motor
Power		100~240VAC 24W, 24V Adapter
Environment	Operating Temp.	41°F to 104°F (5°C to 40°C)
	Storage Temp.	-4°F to 122°F (-20°C to 60°C)
Humidity		10-85% (non-condensing RH)
Size(H*W*D)		303 mm x 180 mm x 394 mm
Agency Approvals		CE, FCC Class A
Weight		5 Kg (11 lb)

\* We do not recommend to rewind die-cut labels. Labels might be torn under certain circumstances.



[www.godexintl.com](http://www.godexintl.com)



Barcodes Made Easy

#### **Godex International (Headquarters)**

13F, No.168, Jian-Kang Road  
Zhonghe Dist, New Taipei City 235 TAIWAN  
Telephone: +886 2 2225 8580  
Fax: +886 2 2225 8480  
Contact us: [infoGT@godexintl.com](mailto:infoGT@godexintl.com)  
Technical support: [techGT@godexintl.com](mailto:techGT@godexintl.com)

#### **Godex Americas**

4023 Camino Ranchero Rd., Ste A  
Camarillo, CA 93012  
Telephone: +1 805 987 5100  
Fax: +1 805 987 5115  
Contact us: [infoGA@godexintl.com](mailto:infoGA@godexintl.com)  
Technical support: [techsupportGA@godexintl.com](mailto:techsupportGA@godexintl.com)

#### **Godex China**

3F, NO.303 Jiang Chang 3 Road Shanghai, China  
Telephone: +86 21 5665 1313  
Fax: +86 21 5665 7455  
Contact us: [shanghai@godexintl.com](mailto:shanghai@godexintl.com)  
Technical support: [support@godexintl.com](mailto:support@godexintl.com)

#### **Godex Europe**

Arnzhauschen 36 D-42929  
Wermelskirchen, Germany  
Telephone: +49 2193 53396 0  
Fax: +49 2193 53396 69  
Contact us: [infoGE@godexintl.com](mailto:infoGE@godexintl.com)  
Technical support: [technikGE@godexintl.com](mailto:technikGE@godexintl.com)