

HPRT Label Printer Seagull Windows Driver

Installation Manual

(Rev.1.0)

CONTENTS

- 1.Manual Information 1
- 2.Operating System(OS) Environment 1
- 3.Installation Preparation 1
- 4.Installation..... 2



1.Manual Information

This Manual provides information on installation according to PC operating system (OS).

We maintain ongoing efforts to enhance and upgrade the functions and quality of all our products. As follow, manual content may be changed without prior notice.

Note: This manual applicable to all models.

2.Operating System(OS) Environment

This driver support for these following operating systems:

- Microsoft Windows 10 (32 bit/64 bit)
- Microsoft Windows 8 (32 bit/64 bit)
- Microsoft Windows 7 SPI (32 bit/64 bit)
- Microsoft Windows Vista SP2 (32 bit/64 bit)
- Microsoft Windows XP Professional SP3 (32 bit)
- Microsoft Windows Server 2012(64 bit)
- Microsoft Windows Server 2008 R2
- Microsoft Windows Server 2008 SP2(32 bit/64 bit)
- Microsoft Windows Server 2003 R2 SP2(32 bit/64 bit)

3.Installation Preparation

Download Seagull Windows Driver application program.

4. Installation



Warning: Under different operating system, the screen has slight difference.

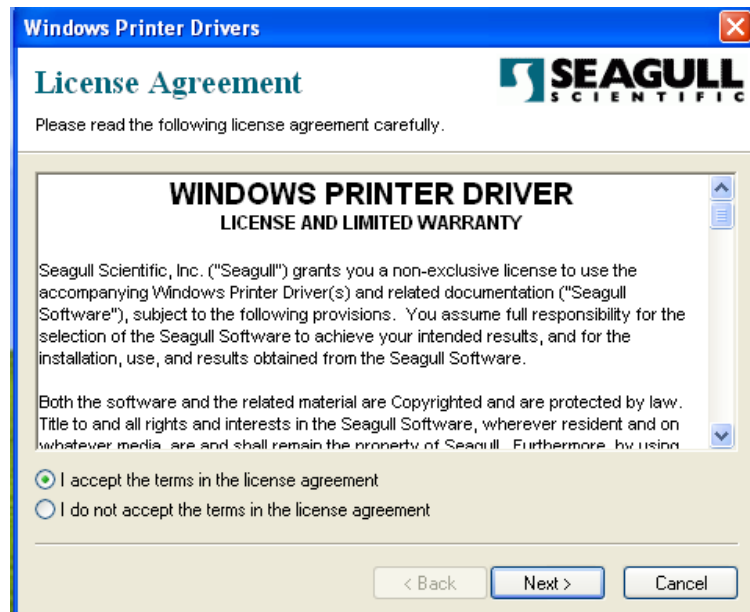
Please operate it according to the tips. Take HPRT R42(Windows XP) as example.

1. Select one interface to connect your printer to computer.

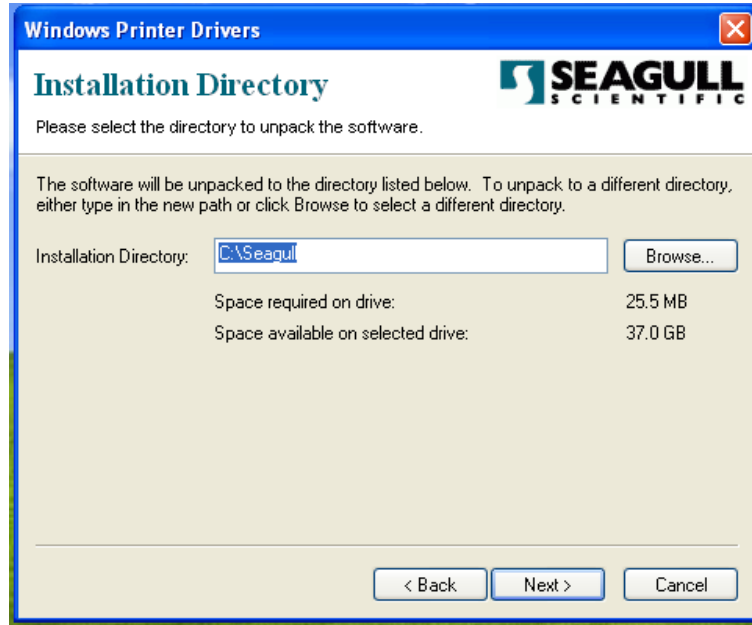
2. Turn on the printer check if it successfully connected to computer.

3. Double click Seagull Windows Driver .

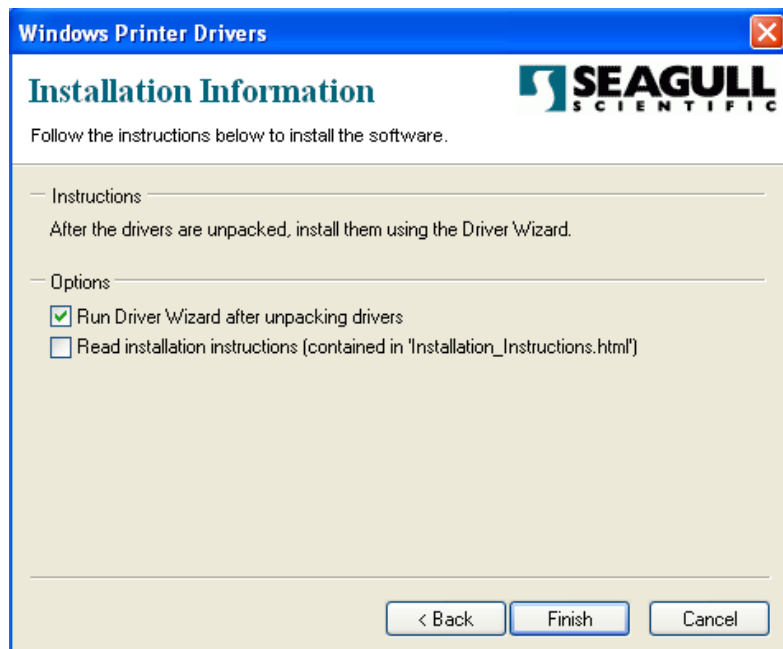
4. After agree to the EULA, click "Next".



5. Select a directory on the computer to unpack the driver or accept the default location then click "Next".



6. Click "Finish".

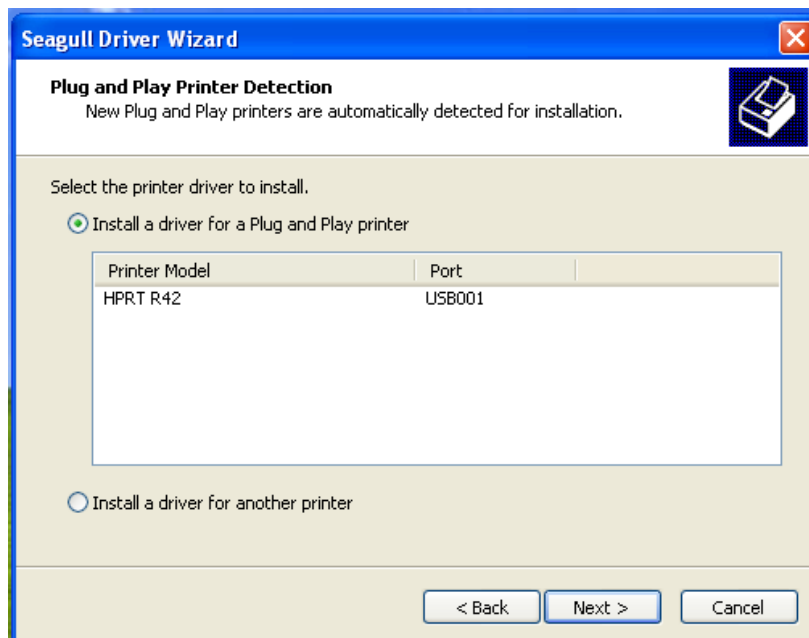


7. Select "Install printer drivers" then click "Next".

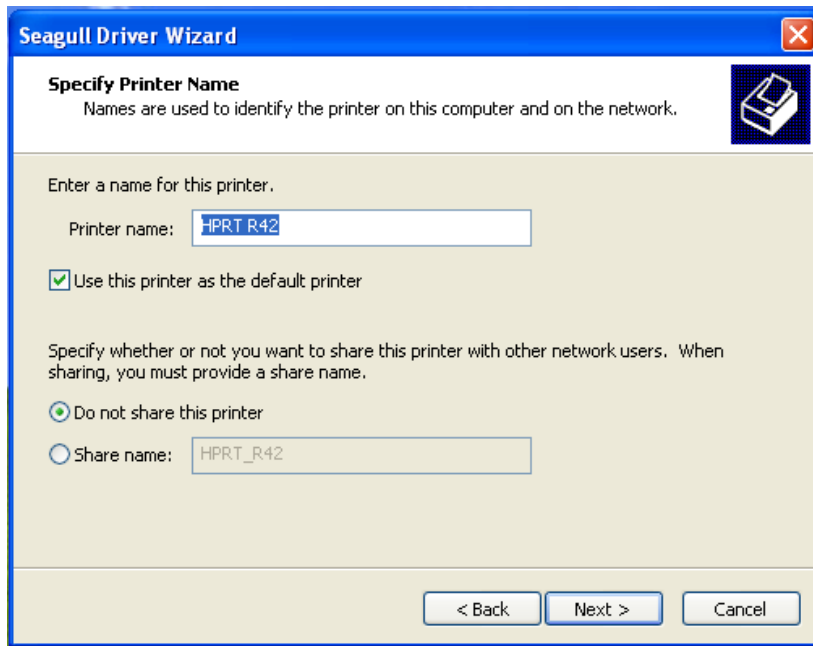


Note: Connect your printer to computer, can automatically detect and install.(Take USB for example)

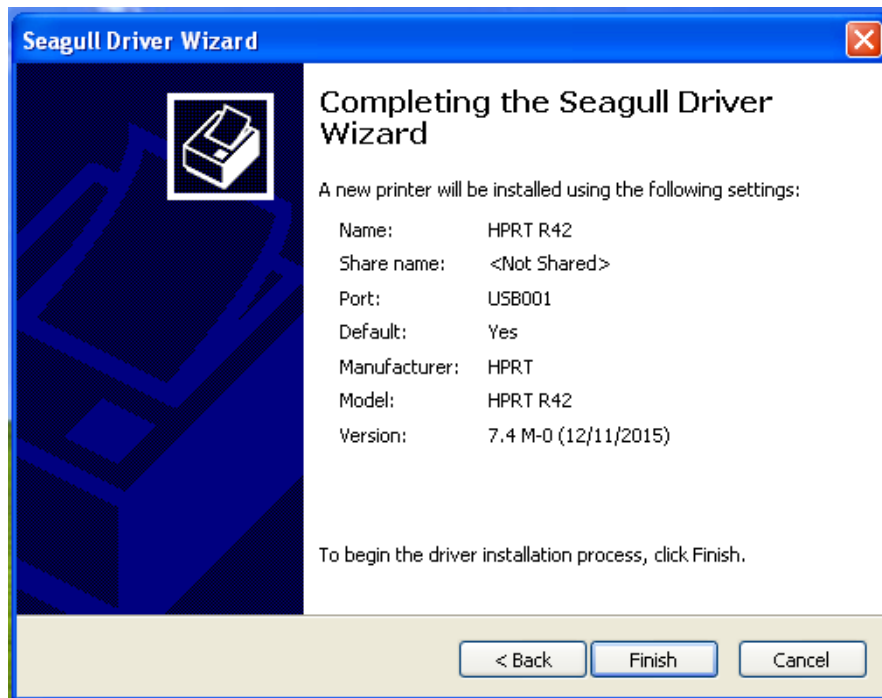
8. Select "Install a driver for a Plug and Play printer, click "Next".



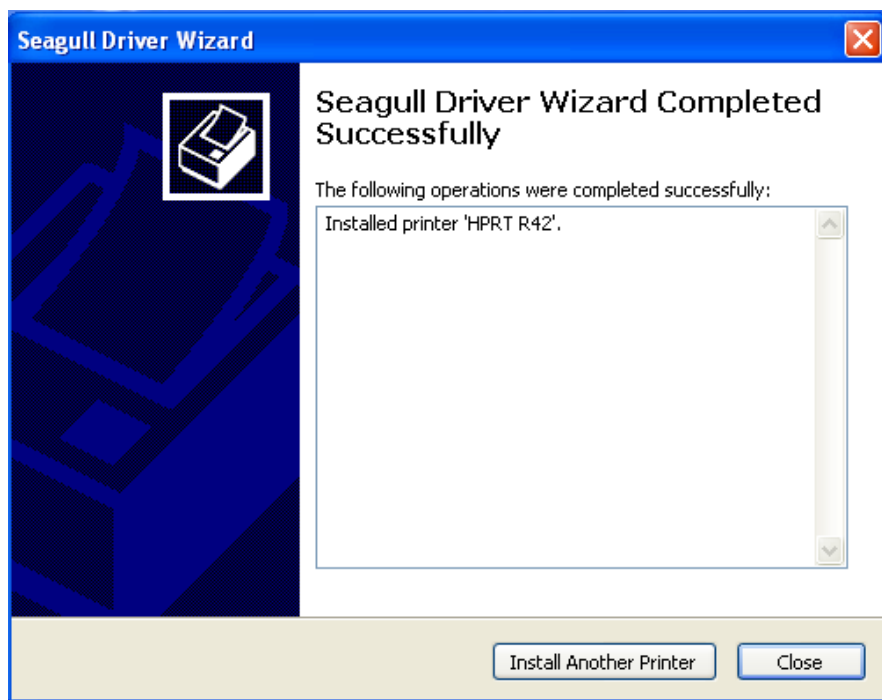
9. Enter a name for this printer, click "Next".



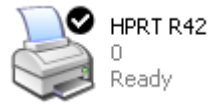
10. Click "Finish".



11. Click "Close", the HPRT R42 Label printer driver installed successfully.



12. After installation, the icon will be found in "Start" → "Printers and Faxes".



Note: If you already installed the driver (No matter what kind of port), when you connect the printer with computer, it will create a USB port automatically.